

CMCSS

CMCSS
BENEFITS
OFFICE

Donna McIntosh
920-7929

Amy Wigington
920-7810

Benefits Newsletter

SPRING - SUMMER 2012

NO CHANGE TO MEDICAL PREMIUMS

We're having a CELEBRATION! The Clarksville-Montgomery County Employee Insurance Trust is not recommending an increase in premium for the medical plan for the 2012-2013 school year.

Please keep up the good work and continue to use the On-Site Medical Clinics when treatment is needed, generics when possible, stay within the Select (S) Network, and utilize Urgent Care Clinics instead of Emergency Room Services when appropriate.

The Board of Education continues to support quality and affordable benefits for the employees of CMCSS. Full time employees



(7.5 or 8 hours per day) continue to receive an 85% contribution towards the total medical premium. Medical premiums for the 2012-2013 school year are as follows:

Medical Monthly Premium:

Single—\$104.48
2-Party—\$204.87
Family—\$245.30

Medical Bi-Weekly Premium:

7.5-8 hour employees:

Single—\$52.24
2-Party—\$102.43
Family—\$122.66

7 hour employees:

Single—\$69.65
2-Party—\$136.57
Family—\$163.52

6.5 hour (or less) employees:

Single—\$87.07
2-Party—\$170.72
Family—\$204.40

INSIDE THIS ISSUE:

Medical Premiums 1

Open Enrollment 1

Can't Make Your Appt? 2

Dates to Remember 2

Insurance Reminder 2

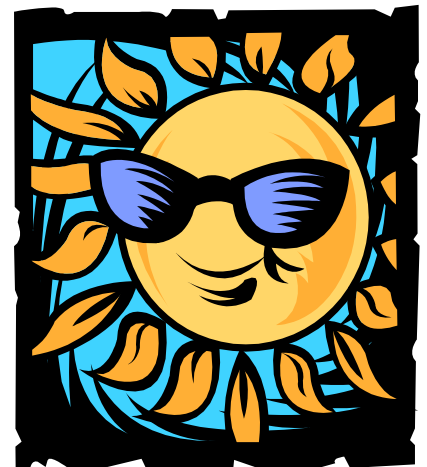
Made Any Changes? 2

Open Enrollment 2012

Open Enrollment will begin for Medical, Dental and Vision plans on August 1, 2012.

If you need to add family members or pick up additional coverage, you may do so between August 1 and September 30, 2012.

Contact the Benefits Office for enrollment forms.





Can't Make Your OSC Appointment?

The On-Site Clinic staff would like to remind employees that a \$10 fee is assessed through a payroll deduction if you or a family member do not keep your scheduled appointment. Please remember to contact On-Site if you are unable to keep your scheduled appointment.



To schedule or cancel an appointment, phone the On-Site Clinic at:

(931) 906-2001

DATES TO REMEMBER

- Monday, May 28

Memorial Day Holiday
Central Office is closed.

- Monday, June 4

Summer hours begin for Central Office. M-Th 7am-5pm. F 7am-11am

- Wednesday, July 4

Independence Day Holiday.
Central Office is closed.
Central Office will close at noon on Friday, July 6.

- Monday, July 30

Central Office returns to normal hours. M-F 7:30am-4:30pm



Reminder About Your Health Insurance



Always use a network provider from the SELECT (S) Network. It is the employee's responsibility (outside of an emergency) to find in-network providers. The provider/hospital is not obligated to tell you whether or not they participate in our network. Local hospitals that participate in the SELECT (S) Network are:

Gateway Vanderbilt St. Thomas Baptist

Reminder: Skyline and Centennial are **NOT** in the SELECT (S) Network. If you are referred to an out-of-network facility by an in-network provider, your claim will be paid at out-of-network rates. ALWAYS ask to use an in-network facility whenever possible.

Made Any Changes? Have Changes Coming Up Over the Summer?

- If you're moving, changing your name, or doing anything that affects your personal information, be sure to let Human Resources know.
- If you're adding a spouse or new baby, or making any changes to your insurance, contact the Benefits Office. Remember that changes to your insurance coverage due to a status change must be made within 30 days of the event.
- If you need to update your beneficiary forms, please contact the Benefits Office.