



CMCSS REOPENING PLAN

2020-2021 SCHOOL YEAR



Contents

1 INTRODUCTION

Communicable Disease Team, Plan Overview,
Calendar Changes for 2020-2021, and
Stakeholder Feedback

7 CONTINUUM OF LEARNING

Reopening Matrix

Traditional Learning

Attendance

Before and After School Care

Cafeteria

Custodial/Operations

Drop-off and Pick-up Procedures

Face Masks/Coverings

Field Trips

Hand Washing/Hand Sanitizing

Personal Protective Equipment (PPE)

Physical Distance, Cohorting, Movement

Positive COVID-19 Response Plan

Recess (Elementary)

Related Arts

Restrooms

Safety & Health Department Trainings

School Procedures

School Nurses

Self-Screening

Testing

Transportation

Travel

Visitors

Water Fountains

Remote Learning

SchoolsPLP

24 CMCSS K-12 VIRTUAL

Role of the CMCSS K-12 Virtual Teacher

Role of the CMCSS K-12 Learning Mentor

Role of the Student

Academics

27 REOPENING PLAN IN REVIEW

Broad overview of the 2020-2021 CMCSS

Reopening Plan

28 RESOURCES

Local, State, and National Resources consulted in
the 2020-2021 CMCSS Reopening Plan

Introduction

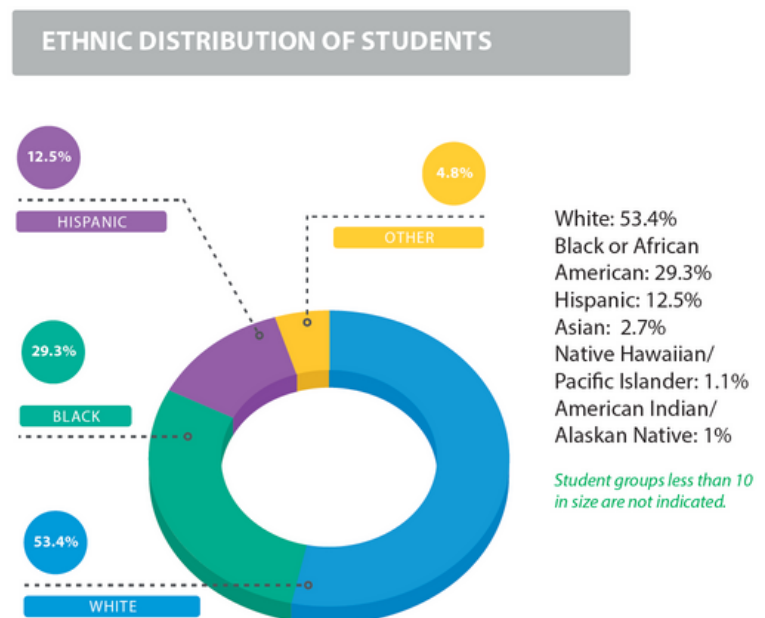
The mission of the Clarksville-Montgomery County School System (CMCSS) is to educate and empower our students to reach their potential. Our vision is all students will graduate college and career ready.

CMCSS is the seventh-largest district in Tennessee, and according to U.S. Census figures, is in one of the fastest-growing communities in the country. There are 41 schools in the district: one K-5 Magnet School, 23 elementary, 7 middle, 7 high, an Alternative School, one Early Technical College at Tennessee College of Applied Technology, and one Middle College, which is located on the campus of Austin Peay State University.

CMCSS Students

CMCSS educates over 37,000 students and employs over 5,100 faculty, staff, and administrators in Clarksville-Montgomery County, which covers over 544 square miles. There are over 44,000 parents and guardians of CMCSS students with over 21,300 unique addresses in the district's student management system.

Over 50% of the district's 37,000+ students qualify for free/reduced lunch. Approximately 17% of students receive special services (IDEA, 504, ELL, etc.). There are 3,200+ CMCSS students with heightened risk for severe illness from COVID-19 and over 500 employees aged 60+. District leadership focused on the demographics of the School System and community as it developed a reopening plan to meet the needs of families as best as possible during the COVID-19 pandemic.





Communicable Disease Team

The CMCSS Communicable Disease Team (CDT) is comprised of leaders from all departments and local health, safety, and medical experts who have been meeting since late February 2020. The CDT continually monitors and evaluates the latest local, state, and national data, guidance, and best practices. The team has developed a flexible plan that has the safety and health of students, employees, and the entire community as the first priority. In addition to considering guidance, recommendations, laws, and policies during the development of the reopening plan, the CDT has sought, and will continue to seek, feedback from parents/guardians, employees, and other community stakeholders.

Dr. Angela Huff, Chief of Staff
Anthony Johnson, Chief Communications Officer
Ashley Dale, Elementary Lead School Counselor
Becky Montrosse, Individual Health Plan Coordinator
Brandi Blackley, Director of Curriculum and Instruction 9-12
Carol Joiner, General Counsel
Danielle Kriminger, District RN/Nursing Supervisor
David Holman, Chief Technology Officer
Dr. Dayna Paine, Career Technical Education Director
Emily Bowers, Safety and Health Specialist
Emily Vaughn, Director of Teaching, Learning, and Innovation
James Sumrell, Chief Operations Officer
Jeanine Johnson, Chief Human Resources Officer
Jessica Goldberg, Director of Communications & Marketing
Jessica Harris, Director of Elementary Schools
Joe Williams, Senior Programmer
Joey Smith, Montgomery County Health Department Director
John Miller, District Programs and Activities Coordinator
Judy Weimer, Secondary Lead School Counselor
Dr. Kevin Stacy, ELL Coordinator
Dr. Kimmie Sucharski, Director of Accountability and Assessment
Lauren Richmond, Safety and Health Coordinator
Marcia Demorest, Chief Financial Officer



Communicable Disease Team continued:

Dr. Mary Gist, Director of Middle Schools
Dr. Mason Bellamy, Director of High Schools
Millard House, Director of Schools
Dr. Sean Impeartrice, Chief Academic Officer
Sharla Smith, Onsite Employee Health & Wellness Manager
Dr. Sheena Hanserd, Student Access Coordinator
Taylia Griffith, Director of Special Populations
Tina Smith, Director of Professional Learning
Tommy Butler, Safety and Health Director
Dr. Tracy Hollinger, Director of Curriculum & Instruction 6-8

Flexible Plan

Due to the ever-changing circumstances and evolving research and guidance regarding COVID-19, the CDT has prepared the district with a flexible plan for reopening schools. This plan will ensure that the district is prepared to continue providing a high-quality education for all students no matter the circumstances.

American Academy of Pediatrics

According to the American Academy of Pediatrics (AAP), “all school re-entry policies should consider the following key principles:

- School policies must be flexible and nimble in responding to new information, and administrators must be willing to refine approaches when specific policies are not working.
- It is critically important to develop strategies that can be revised and adapted depending on the level of viral transmission in the school and throughout the community and done with close communication with state and/or local public health authorities and recognizing the differences between school districts, including urban, suburban, and rural districts.
- Policies should be practical, feasible, and appropriate for child and adolescent's developmental stage.



- Special considerations and accommodations to account for the diversity of youth should be made, especially for our vulnerable populations, including those who are medically fragile, live in poverty, have developmental challenges, or have special health care needs or disabilities, with the goal of safe return to school.
- No child or adolescent should be excluded from school unless required in order to adhere to local public health mandates or because of unique medical needs. Pediatricians, families, and schools should partner together to collaboratively identify and develop accommodations when needed.
- School policies should be guided by supporting the overall health and well-being of all children, adolescents, their families, and their communities. These policies should be consistently communicated in languages other than English, if needed, based on the languages spoken in the community, to avoid marginalization of parents/guardians who are of limited English proficiency or do not speak English at all.

With the above principles in mind, the AAP strongly advocates that all policy considerations for the coming school year should start with a goal of having students physically present in school.

The importance of in-person learning is well-documented, and there is already evidence of the negative impacts on children because of school closures in the spring of 2020. Lengthy-time away from school and associated interruption of supportive services often results in social isolation, making it difficult for schools to identify and address important learning deficits as well as child and adolescent physical or sexual abuse, substance use, depression, and suicidal ideation. This, in turn, places children and adolescents at considerable risk of morbidity and, in some cases, mortality. Beyond the educational impact and social impact of school closures, there has been a substantial impact on food security and physical activity for children and families."

2020-2021 Calendar

Based on several important factors including stakeholder feedback and ever-changing health conditions, the district will move the first day of school to August 31, 2020. This decision allows families time to prepare for traditional school or enroll in virtual school if they choose. An August 31, 2020 start date provides faculty and staff time for specific training on and application of digital-blended learning, health and safety protocols, and trauma-informed classrooms before students are back in session.

Fall break, spring break, and graduations will not be affected by this calendar change.

Stakeholder Feedback

In addition to considering guidance, recommendations, laws, and policies in developing the plan, the CDT sought feedback from parents/guardians, employees, and other community stakeholders. Surveys were conducted in early June with an over 50% response rate from parents/guardians and employees. Additionally, the district created a structure for providing ongoing feedback at cmcss.net/reopening. The statistics below show the percentage of each stakeholder group who selected a traditional (in-person) return to school as their preferred choice based on comfort level, safety concerns, and any other needs or preferences:

Parent/Guardian	Certified/School Admin	Classified/District Admin
54%	62%	55%

Additionally, survey results show that 56% of parents/guardians would consider a virtual option taught by a CMCSS teacher for their child if schools open in a traditional manner without additional safety precautions.

Full parent/guardian survey results are on the following page.

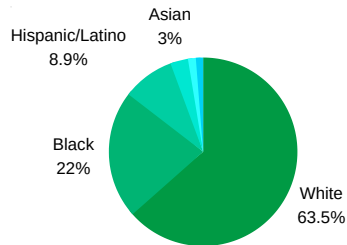




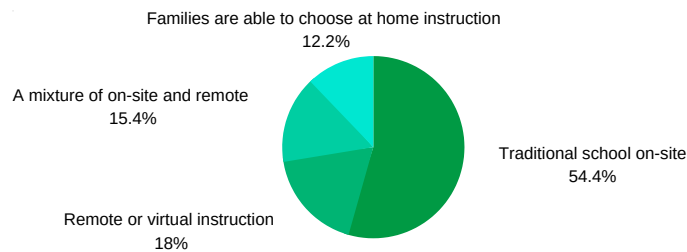
Parent/Guardian Reopening Survey

Demographic Overview:

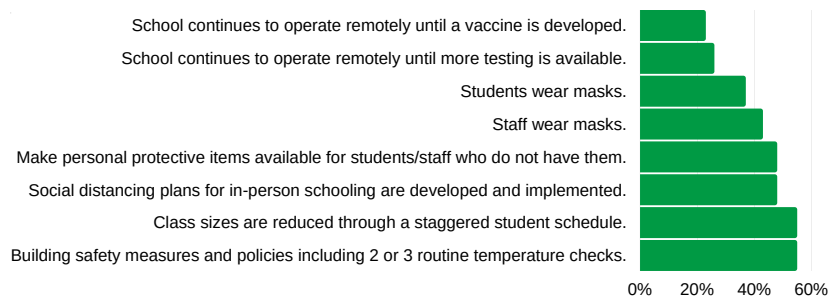
Total Students Represented 18,143 (50%)
Free/Reduced (43%)



Based on safety concerns, comfort level, and any other needs and preferences, the following represents the percentage of "most preferred" rankings for each option for schools in the fall:



Based on safety concerns, what needs to be in place before opening schools in the fall:



67% plan for their child to return if schools open in the traditional manner without additional safety precautions in the fall.

55% would consider enrolling their child in a virtual school taught by a CMCSS teacher if schools open in the traditional manner.

70% said they have the ability to transport their child if the CDC guidelines continue to impact bus transportation processes.

94% report having reliable internet access at home.

77% state their child has a device other than a cell phone for use in virtual learning

78% feel comfortable assisting their child with the technology required for virtual learning

65% feel comfortable supporting their child with grade-level academic content

37% are concerned with childcare access if alternate models for opening are implemented in the fall

Informed Decision

CMCSS families will be able to choose to enroll their student(s) in the K-12 Virtual or have their child(ren) return to a traditional school setting under the Continuum of Learning.



Traditional

A flexible plan including both traditional and remote learning models implemented as needed with health, safety, and operational changes to reduce the spread of COVID-19



CMCSS K-12 Virtual

A full time school of choice, offering families a comprehensive K-12 virtual instruction program. Students must commit per semester to CMCSS K-12 Virtual.

Continuum of Learning

In order to create a flexible plan to ensure the continuity of high-quality instructional delivery, the CDT developed a Continuum of Learning (previously known as the Continuum of Options). This plan prepares the district for both traditional and remote learning models. Additionally, an essential consideration as CMCSS developed reopening plans was to provide parents/guardians and students with personal options. Varying degrees of comfortability and underlying health conditions were important considerations during strategic planning. All parents/guardians will have the choice to enroll their child(ren) in the CMCSS K-12 Virtual open enrollment option for the 2020-21 school year.

At any point during the academic year, CMCSS may need to switch the entire district, or individual schools, in or out of traditional and remote models based on the current conditions surrounding the pandemic. Due to the ever-changing circumstances of the pandemic, parents and guardians should make preparations throughout the year in the event that school buildings are closed and remote learning must take place.

As of July 10, 2020, the district will be reopening schools in the traditional model on August 31, with modifications and precautions in place for the health and safety of students, employees, and the entire community. All parents/guardians will have the option to enroll their child in CMCSS K-12 Virtual, a school of choice taught by CMCSS teachers and provided at no cost to families.

CONTINUUM OF LEARNING



TRADITIONAL

Traditional, in-person classes for K-12 students with health, safety, and operational changes to reduce the spread of COVID-19



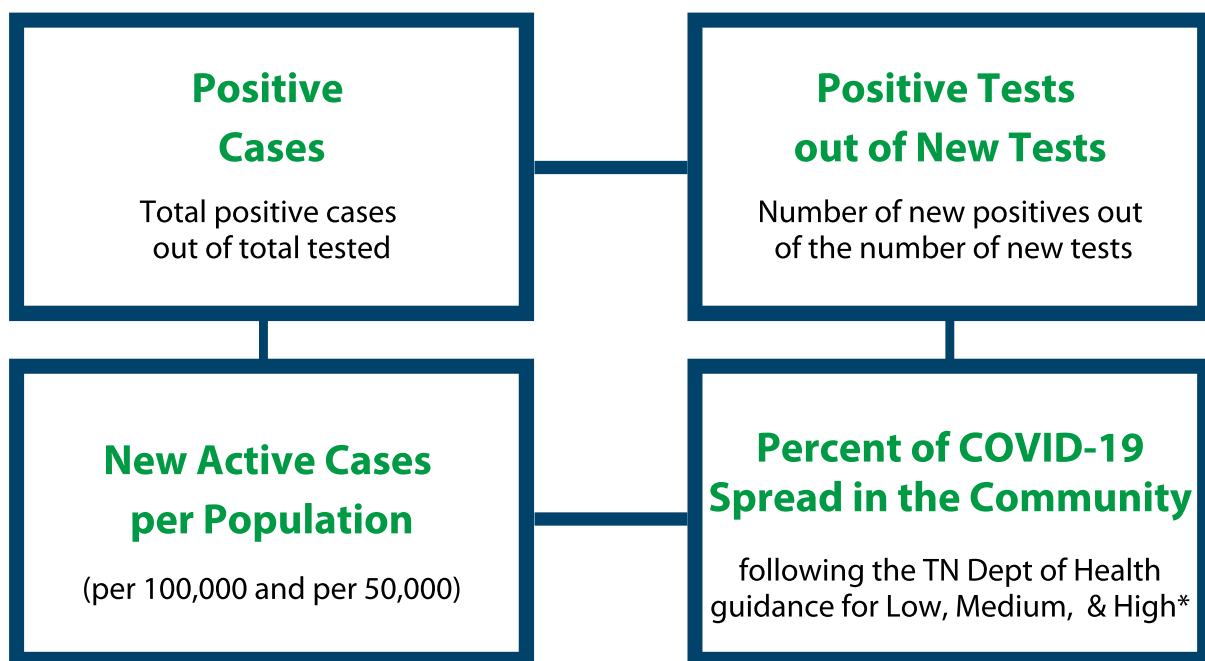
REMOTE

A plan for the entire district, or individual schools, to have students learning remotely if needed at any time.

As the conditions surrounding the pandemic change, the district will be prepared to continue to provide a high quality education to all students, no matter the circumstances. When necessary, CMCSS could make the decision to move back and forth between traditional and remote throughout the school year for the health and safety of students.

Reopening Matrix

The CMCSS Communicable Disease Team in conjunction with the Montgomery County Health Department will continuously review the local spread of COVID-19 to make district-wide decisions related to the Continuum of Learning options. Although some districts are selecting one metric to determine in-person vs. remote learning, there is not a general consensus at this point on which metric is best for making school closure decisions. Therefore, CMCSS and the Montgomery County Health Department are taking a more holistic approach and are, on a daily basis, reviewing the metrics in Montgomery County.



Tennessee Health Department Guidance

Normal Operations: 0 positive COVID-19 cases in Montgomery County

Low Spread: less than 0.5% positive COVID-19 active cases in Montgomery County

Medium Spread: 0.5% to 1% positive COVID-19 active cases in Montgomery County

High Spread: Greater than 1% positive COVID-19 active cases in Montgomery County

While all metrics will be considered throughout the academic year, if Montgomery County reaches medium COVID-19 spread in the community, CMCSS and MCHD will consider additional health and safety protocols for the traditional model or consider transitioning all students to remote learning as deemed necessary. If Montgomery County reaches high COVID-19 spread, CMCSS and MCHD will transition all students to remote learning.



Traditional

In the traditional model, students are physically present in their zoned schools. While the traditional model will provide some normalcy during the pandemic, there will be several district-wide and school-specific precautions and modifications in place to mitigate, not eliminate, risk of COVID-19. Some of the major considerations include, but are not limited to:

Attendance

While education is important and every minute makes a difference when it comes to regular attendance, ultimately, nothing is more important than the health of students and employees. Therefore, modifications will be made to the attendance policy for the 2020-21 school year. If students or employees are sick or someone in their home is exhibiting symptoms of COVID-19, they should not come to school.

Before/After School Care

Before- and/or after-school care has been provided over the past several years at select elementary schools through the YMCA Fun Company. CMCSS will continue to allow the YMCA Fun Company to operate in schools with additional health and safety precautions. The YMCA Fun Company may adopt additional policies, procedures, or requirements. Families choosing this option should consult with the YMCA.

Cafeteria

Students will eat in the school cafeteria unless otherwise configured by the school. By state law, teachers receive a duty-free lunch period, and in the majority of instances there is not enough school-based staff to monitor meals in the classroom. The district will space students as best it can, but parents should not expect that students would be provided with six feet of separation from other students while eating breakfast and/or lunch in the school cafeteria. The following are additional protocols that the Child Nutrition Department will follow:

- All Operations/Child Nutrition employees will self-screen and have temperatures taken before each shift.
- Staff are required to wear masks in addition to all standard safety protocols.
- Additional training for all Child Nutrition employees (focus on cleaning, disinfecting, specific protocols, and social actions.)
- Students sharing meal items or placing extra items they do not consume, on what are commonly referred to as “share tables”, will be prohibited.
- Choices will be further limited and served by staff only.
- Meals and utensils will be handed to students to reduce contact.
- Child Nutrition staff will key in the student IDs to reduce contact with the keypad.



Cafeteria continued

All CMCSS families who wish to use the cafeteria this year are encouraged to pre-pay their student's cafeteria account via SchoolCafé. The safe and convenient online system allows parents to make payments, track meal balances and purchases, and monitor their student's account.

Families with students in CMCSS K-12 Virtual will be able to pick up meals for children at schools. Details for this pick-up service will be provided in the coming weeks.

Parents/guardians who feel their household may be eligible for free or reduced meal benefits should apply online at SchoolCafé. The online application allows for a contact-free, secure application environment. Free and reduced meals are available for eligible students choosing either traditional or CMCSS K-12 Virtual.

Should individual schools or the entire district need to transition from traditional to remote, the district will communicate details on the plan to provide meals for remote learning.

Custodial/Operations

The Operations Department is continuing to make modifications to custodial procedures to reduce the spread of communicable diseases. The following are some of the modifications that will currently be in place:

- Custodial schedules will be adjusted to allow more custodians in the building during the school day.
- The maintenance department will handle all grounds keeping so the custodial staff can focus on cleaning inside the school building.
- Disinfecting stations will be established at select entrances and throughout the school building.
- The District will provide sanitizing products in all active classrooms.
- There will be an increased focus on two-step cleaning throughout the day and a decreased focus on window cleanings, floor buffing, etc.
- In classrooms, students' desks will be oriented in the same direction.
- All desks, students and teachers, will be cleared at the end of the school day to allow for proper disinfecting by custodians.
- Deep cleaning with pressurized spraying of disinfectants will take place after school each evening by custodians.
- If there is a known outbreak in a room, the room will be closed and extensively deep cleaned to include increased air filtration.
- All buses will be disinfected by the Vehicle Maintenance Department after the morning runs and again after the afternoon runs using "HDQ" and following a pressurized spray, wait, and wipe method.
- An enhanced two-step restroom-cleaning schedule will be in place during the school day with restrooms accessed through main hallways being cleaned every hour by custodians.

Custodial/Operations continued

- At the end of the day and during the teachers' planning period, K-2 restrooms in classrooms will be cleaned by custodians.
- The following disinfectant has been purchased and will be used by CMCSS: Super HDQ. Product label and description are available on cmcss.net.
- The District will increase indoor air filtration from MERV 9 to MERV 13 filters whenever possible.
- Mechanical systems (HVAC) will run 24 hours a day, 7 days a week. Increased outdoor air ventilation up to 100% as indoor and outdoor conditions permit.

Drop-off/Pick-up Procedures

Individual schools will make modifications as needed to their morning drop-off and afternoon pick-up procedures based on additional safety protocols. Schools will communicate these changes to families at the beginning of the year.

Face Masks/Coverings

See Personal Protective Equipment (PPE)

Field Trips

CMCSS will not be permitting field trips for any grade level during the school day for at least the first semester of the 2020-2021 school year.

Hand Washing/Hand Sanitizing

As recommended by the CDC, washing hands with soap and water for 20 seconds is the best way to get rid of germs in most situations. Students and staff will be required to wash hands throughout the day. When soap and water are not available, hand sanitizer is an acceptable substitute. Hand sanitizing stations will be placed throughout school buildings and in cafeterias.





Personal Protective Equipment (PPE)

Face Masks

CMCSS face mask requirements are based on local, state, and national guidance, including the American Academy of Pediatrics and the CDC, as well as feedback from families and employees. All students utilizing CMCSS transportation are required to wear masks while on the bus.

All (general education and special populations elementary, middle, and high school) students are required to wear masks in all common areas in the school building (hallways, restrooms, front offices, counseling or administrative offices, etc.) and when physical distancing cannot be maintained anywhere in the building (including, if applicable, in classrooms).

There will be special considerations and exemptions made as needed regarding mask requirements. The district understands that some students may have health concerns or physical and emotional limitations that make masks difficult to wear.

Parents/guardians will be required to provide medical documentation to the school beginning Mon., Aug. 10 as to why their child cannot wear a mask. Employees are required to wear masks in all common areas in the school building (hallways, restrooms, front offices, counseling or administrative offices, etc.) and when physical distancing cannot be maintained anywhere in the building (including, if applicable, in classrooms). CMCSS will review an employee's concerns regarding wearing a mask if they have a documented medical condition. Employees with these concerns may contact Jeanine Johnson, CHRO.

Students and employees are urged to bring their own masks. However, the district will have masks available for any students or employees who do not have their own. Cloth face masks should be washed after each use.

Face masks must adhere to the Student Dress Code in the Student Code of Conduct: obscene, profane, provocative, violent, or inflammatory words or pictures on body/skin, clothing or jewelry, or clothing advertising alcoholic beverages, drugs, drug paraphernalia or tobacco products are prohibited and students are prohibited from wearing, while on school property or at any school-sponsored activity, any type of clothing, apparel, or accessory, which denotes such students' membership in or affiliation with any gang (T.C.A. § 49-6-4215).

According to the CDC, it is not known if face shields provide any benefit as source control to protect others from the spray of respiratory particles. The CDC does not recommend use of face shields for normal everyday activities or as a substitute for cloth face coverings.



Personal Protective Equipment (PPE) continued

CMCSS has purchased large quantities of PPE and will continue to monitor supply levels and order supplies as needed as funding allows.

Currently, the district has:

76,675 procedure masks for students

34,625 TN Sock masks

250 N95 masks

1,000 K95 masks

The district anticipates receiving over 1,460,000 procedure masks and 30,000 cloth masks from the State of Tennessee over the school year. The district has purchased hundreds of boxes of gloves, and has received thermometers from the State of Tennessee that will be utilized as needed.

As recommended by the CDC, washing hands with soap and water for 20 seconds is the best way to get rid of germs in most situations. Students and staff will be required to wash hands throughout the day. When soap and water are not available, hand sanitizer is an acceptable substitute. Hand sanitizing stations will be placed throughout school buildings and in cafeterias.

In addition to the hand sanitizer the district already has in stock, the Operations Department has ordered over 700 half gallon bottles of hand sanitizer as well as 5 gallon refills.

Sneeze guards will be installed in all front offices.

Physical Distancing, Cohorting, and Movement in the Building

As described by the American Academy of Pediatrics, physical distancing, sometimes referred to as social distancing, is simply the act of keeping people separated with the goal of limiting the spread of contagion between individuals. There is a conflict between optimal academic and social/emotional learning in schools and strict adherence to current physical distancing guidelines. Each school will develop guidelines to promote physical distancing that are developmentally appropriate and feasible.

Physical Distancing, Cohorting, and Movement in the Building continued

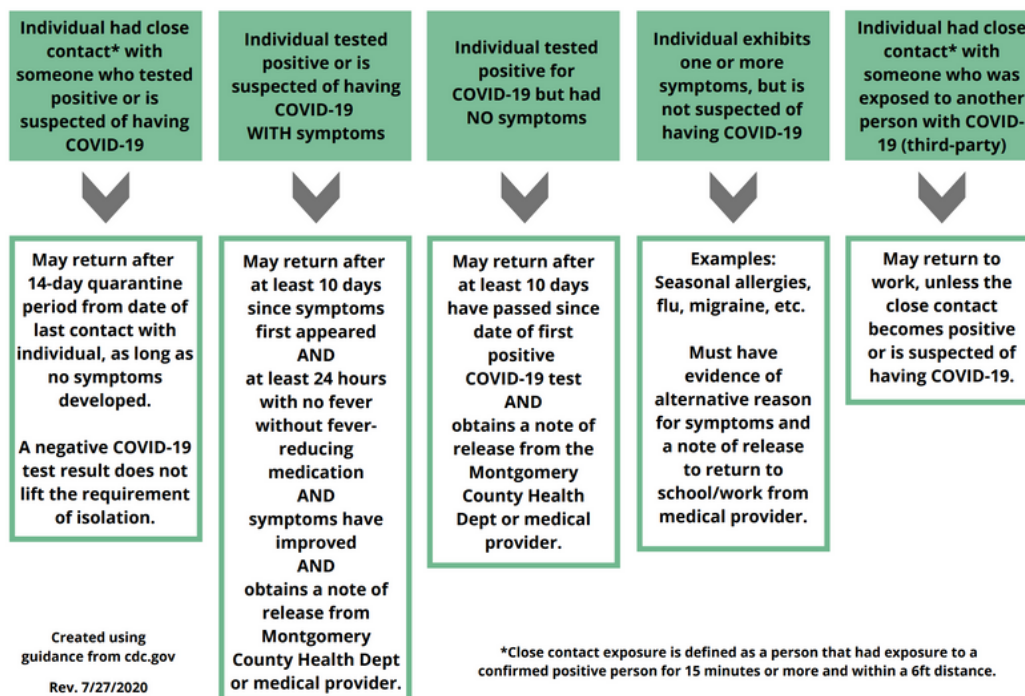
School buses are mass transit vehicles and CMCSS school buildings, classrooms, and cafeterias are designed and equipped to serve large numbers of students at the same time. District vehicles and facilities are not capable of providing the six feet of individual spacing that is currently recommended by the CDC to reduce or prevent the spread of COVID. Parents and guardians selecting a traditional return to school for their children should not expect that their child(ren) would remain six feet from their classmates during their ride to and from school or at all times while they are in district buildings.

Students will be required to remain seated in classrooms with assigned seats, and when feasible, will remain with cohorts to minimize cross-over with other students and staff.

Positive COVID-19 Cases (Exposure Response Plan)

The CMCSS Safety and Health Department will investigate any potential exposure cases in the school system in collaboration with the Montgomery County Health Department. Procedures and protocols are continuing to be developed as new guidance is released.

CMCSS RETURN TO SCHOOL/WORK FLOWCHART



CMCSS Return to Work/School Flowchart developed by the CMCSS Safety and Health Department in collaboration with the Montgomery County Health Department.



Positive COVID-19 Cases (Exposure Response Plan)

Any school closures will be decided in conjunction with the CMCSS Communicable Disease Team and the Montgomery County Health Department. Transitioning from traditional to remote (rolling closures) for individual schools will be affected by the time frame required for receipt of test results and the length of time it takes to conduct contact tracing.

In collaboration with the Safety and Health Department, Communicable Disease Team and the Montgomery County Health Department, the CMCSS Communications Department will support schools in promptly communicating any school-level closures to stakeholders via phone, text, email, school and district websites, and other communications channels as needed.

CMCSS will implement the new Standard Response Protocol that includes the addition of the "HOLD" response. The new response will be used to ensure building occupants are not moving throughout the building during an investigation of a suspected COVID-19 positive case currently in the building.

Recess (Elementary)

Recess will still occur. Outdoor spaces will be utilized when possible and when it is feasible to maintain physical distancing to the best of the school's ability.

Related Arts

Physical Education, Choir, Band, and other large classes will be reorganized to allow for smaller classes to support physical distancing and other precautions. When possible, classes will utilize a 10-12 foot physical distancing rule for activities that require an increased heart rate which results in deeper respiratory breathing.

Desks, chairs, music stands, and art tables will be faced the same direction to comply with physical distancing measures.

Restrooms

An enhanced two-step restroom-cleaning schedule will be in place during the school day with restrooms accessed through main hallways being cleaned every hour. At the end of the day and during the teachers' planning period, K-2 restrooms in classrooms will be cleaned.



Safety and Health Department Trainings

The CMCSS Safety and Health Department, in conjunction with the CMCSS Professional Learning Team, will develop online COVID-19 training for students, staff, parents, and visitors before the start of the 2020-2021 school year. The training will consist of the following items:

- School Safety teams training on symptoms of COVID-19, prevention techniques, and CMCSS procedures relevant to the individual to prevent and minimize exposure
- Personal sanitation guidelines such as hand washing, hand sanitizer vs. soap and water, cleaning of personal and high touch areas by students and staff, etc.
- Temperature and symptom screening of students and staff
- At-home screening measures prior to riding CMCSS transportation or arriving at school
- Universal precautions when in contact with bodily fluids
- Personal Protective Equipment
- Physical Distancing/closure of meeting areas
- Health screening room spaces and removal protocols to use when suspicions of COVID-19 arise and the role of the School Nurse
- Immediate notification of CMCSS Safety & Health Department in the event of a suspected or identified case of COVID-19 among students or staff
- What to do when a COVID-19 exposure occurs (exposure rubric)
- Building expectations including when in-depth cleaning protocols are necessary
- Bus seating and sanitization measures
- Training of visitor guidelines and measures CMCSS will use to minimize additional community entry into schools to prevent crowding (i.e. parent drop off without building entry)

School-Based Mitigation Measures

Each school building will utilize its School Safety team to ensure proper hygiene measures are in place throughout the school year. The School Safety team will attempt to maintain minimization of the risk of transmission of COVID-19 in the following areas:

- Identify specific hand washing times for each class
- Implement hand sanitizer stations in the front office areas and throughout the building
- Procure and use disinfecting and personal hygiene supplies
- No mass gatherings such as assemblies and pep rallies unless appropriate physical distancing can be maintained
- No field trips for at least the first semester; encourage virtual field trips, where feasible

School-Based Mitigation Measures continued

- Procurement and use of signage to communicate policies and procedures to staff, students and families
- Identify Health Screening Rooms and protocols for immediate removal of symptomatic individuals
- Spot check for physical distancing, continued closure of meeting rooms/assembly areas, handwashing, etc.
- Develop school-specific plans for how people enter and exit the building and who may be allowed in different parts of the building to reduce traffic and congestion.
- When feasible, limit class exchanges, have teachers rotate between classes, and cohort students as much as possible.
- Students will be required to have assigned seats, and when feasible, will remain with cohorts to minimize cross-over with other students and staff.

School Nurses

The role and responsibilities of the school nurse are essential healthcare workers as we face the COVID-19 pandemic in our community and schools. The following are some of the specific responsibilities of the school nurse during the pandemic:

- The Safety & Health Department will take the lead on the COVID-19 Exposure Response Plan. The school nurse will ensure school staff and families know how to contact the Safety & Health Department.
- School nurses will assess and evaluate students exhibiting any COVID-19 symptoms.
- Evaluate the current school nurse designated space and determine if there is an adjacent space for health screenings.
- Each school is required to have a Health Screening Room for anyone displaying COVID-19 symptoms.
- Each school will have a system in place for the nurse to triage sick students so that students receiving well services aren't exposed to sick children.
- Use standard transmission-based precautions when caring for sick people.
- Update school-based communicable disease policies as guidance changes.
- Inventory and request supplies for school clinics (sanitizer, soap, tissues, paper towels, trash cans for the Health Screening Room that are no touch or without lids, cleaners/disinfectants, PPE, etc.)
- Closely monitor school health data.
- Educate students and families on when they should stay home and when they may return to school in conjunction with their medical provider/Montgomery County Health Department.
- Identify the number of students with underlying health considerations.



Self-Screening

Employees will be expected to self-screen, including temperature checks, before entering school premises.

Self-screening protocols for students and visitors will be implemented as needed. However, families are strongly encouraged to engage in self-screening at home prior to each school day. If students or employees are sick or someone in their home is exhibiting symptoms of COVID-19, they should not come to school. Visit cmcss.net for a link to the CDC regarding screening K-12 students for symptoms of COVID-19.

Modifications will be made to the student attendance policy for the 2020-2021 school year to the extent allowable by law. If students or employees are sick or someone in their home is exhibiting symptoms of COVID-19, they should not come to school. CMCSS is awaiting a COVID-19 specific code from the Tennessee Department of Education for attendance purposes. Students who need to be out for an extended period due to illness will be excused, and there will not be a gap in their education as the district will have the ability to provide remote learning for that student.

For employee-specific attendance questions, please click [here](#) for the Families First Coronavirus Response Act (FFCRA) policy. Employees with concerns should email michael.tharpe@cmcss.net.

Self-Screening Protocol

Have you or anyone in your household had any of the below symptoms as a new-onset in the past 72 hours? (This does not include chronic conditions)

- fever of 100 degrees or greater
- new onset of a cough
- new onset of shortness of breath
- new onset of sore throat
- new onset of body aches
- diarrhea
- new onset of headache
- new onset of loss of taste or smell
- nausea or vomiting
- congestion or runny nose
- chills
- fatigue



If “yes”, please consult your personal health care provider before returning to any CMCSS locations.



Testing

The Clarksville-Montgomery County School System cannot conduct COVID-19 testing or require students to be tested.

Transportation

According to the American Academy of Pediatrics, parents are encouraged to consider alternative methods of transportation to and from school because passengers on school buses will not always be afforded a minimum six-foot distance from other students. Parents and guardians selecting a traditional return to school for their children and who opt-in to transportation should not expect that their child(ren) would remain six feet from their classmates during their ride to and from school.

The following protocols will be in place on CMCSS transportation:

- All employees must self-screen and have their temperatures taken before each shift.
- Bus Aides, Bus Monitors, and students are required to wear masks the entire time while on the bus.
- Drivers will wear masks while the bus is secured, but will not wear a mask while driving.
- Students must bring their own masks, but extra masks will be available on every bus.
- Buses will be disinfected every day by the Vehicle Maintenance Department after morning and afternoon runs.
- Hand sanitizer will be available on all buses.
- Seats will be assigned and passenger attendance sheets will be completed every day by the driver. (Assigned seating is imperative to allow for contact tracing.)
- If a student, driver, monitor, or aide tests positive, the bus will be placed out of service for 24 hours and disinfected.
- Additional bus stops will be added to reduce the number of students at each bus stop.
- Bus windows and roof vents will be open when possible. (Windows will be cracked and roof vents open during inclement weather routes.)

Travel

Since March 12, 2020, CMCSS has restricted school- and district-sponsored travel.

Until further notice:

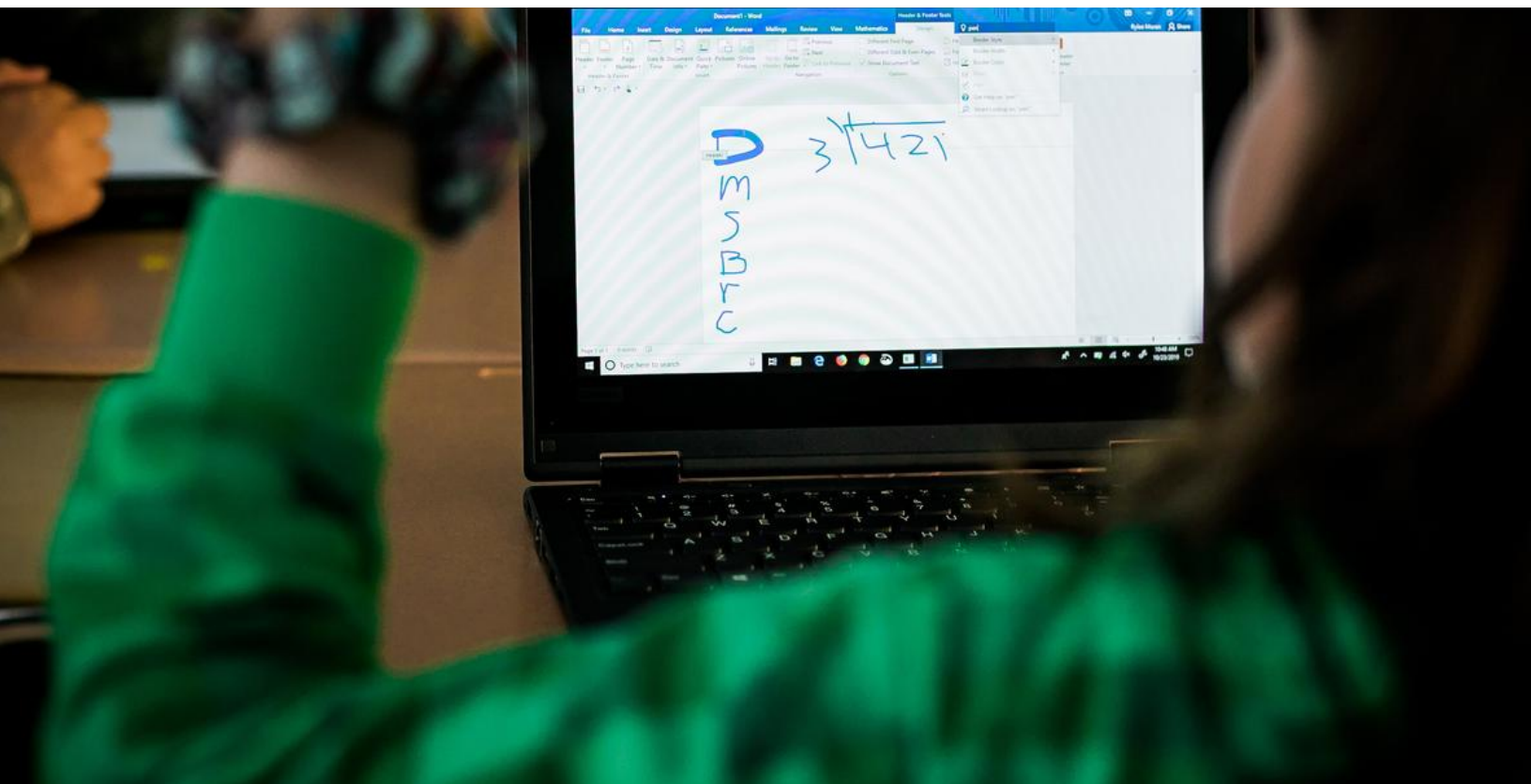
- All school- or district-sponsored out-of-state travel for employees and students is prohibited.
- All school- or district-sponsored in-state travel via CMCSS transportation will continue to be reviewed on a case-by-case basis for approval.
- All school- or district-sponsored travel on for-hire transportation (charter bus, planes, etc.) for students and employees is prohibited.

Visitors

CMCSS will limit nonessential visitors from the school environment to prevent crowding, and access to the building will be limited for all visitors. Lunchtime visitors will not be permitted. Essential visitors should conduct a self-screening of symptoms before entering the building and will be required to wear a face mask while on campus. Building administrators will approve any essential visitors throughout the day. Parents/guardians should call or email their child's teacher or the front office of the school to set up an appointment before arriving.

Water Fountains

Water fountains will be taped off and unavailable until further notice. Students should bring bottled water to school each day. Touchless water bottle filling stations can still be utilized. However, these stations are not available at all school locations and it is not feasible for an entire school. The district will continue to explore options for hydration.





Although the CDT has recommended reopening school in a traditional model while providing parents with the CMCSS K-12 Virtual option, at any point during the academic year, CMCSS may need to switch the entire district or individual schools in or out of traditional and remote models based on the circumstances of the pandemic. Due to the ever-changing circumstances of the pandemic, parents and guardians should make preparations throughout the year in the event that school buildings are closed and remote learning must take place.

Remote Learning

With the uncertainty of the pandemic, there could be school-specific or district-wide rolling closures throughout the school year. The district will be prepared to transition learning from traditional, in-person instruction to all students learning remotely if necessary. CMCSS students in grades 2-12 will have a district-issued laptop and be required to log in to the virtual system daily to complete assignments. Attendance will be tracked. In collaboration with community partners, the district will make every effort to provide internet connectivity to every student in need.

Students in kindergarten and first grade will receive paper-based instructional materials with specific guidance for caregivers to support learning at home. Teachers will have office hours and will be available to assist students, provide feedback, and guide learning.

SchoolsPLP

To support remote learning, all students will be set up with access to SchoolsPLP, an online learning management system. SchoolsPLP is the latest and most comprehensive online and blended learning course catalog, for grades K-12, with a simple and intuitive interface. All teachers will be trained to utilize SchoolsPLP so that individual schools or the entire district can be prepared to switch to remote learning as necessary.

CMCSS K-12 Virtual

CMCSS K-12 Virtual is a full-time school of choice, offering parents and students a comprehensive kindergarten through twelfth-grade virtual instruction program at no cost to families that can be accessed at any time and from anywhere during the regular school year. K-12 Virtual will follow the same calendar as the traditional CMCSS school calendar. As a school of choice, it provides students with an opportunity to learn through an interactive platform as well as live instruction provided by teachers who are employees of the Clarksville-Montgomery County School System and certified by the state of Tennessee. CMCSS K-12 will abide by all State of Tennessee and School Board policies governing promotion, retention, and graduation.

CMCSS K-12 Virtual:

- is a full-time, virtual learning environment
 - is staffed by CMCSS teachers who are certified by the Tennessee Department of Education
 - provides technology devices for enrolled students
 - provides internet service (hotspots) to enrolled students in need
 - offers core content (English-language arts, math, science, and social studies) in grades K-8
 - offers high school courses that closely mimic the offerings in the traditional setting
 - follows the same traditional CMCSS calendar
 - requires a semester commitment
-

Role of the CMCSS K-12 Virtual Teacher

CMCSS K-12 Virtual students are assigned to Tennessee certified teachers who are responsible for teaching and assessing Tennessee state content standards through weekly virtual classes, scheduling assessments, grading assignments, and monitoring the students' progress. The student and teacher enhance their academic relationship using today's technology, which may include a combination of email, video chats, phone communication, and teacher feedback videos. Teachers review a student's progress, document their interactions with each student, and develop the strategies to improve a student's online education. Teachers also provide students with academic challenges to raise the academic bar and create education plans to meet the needs of all students.

Role of the CMCSS K-12 Learning Mentor

Without the physical presence of the trained Learning Mentor (LM), this program will not be successful. The Learning Mentor is a parent, legal guardian, or approved adult trained by CMCSS K-12 Virtual staff in a face-to-face or virtual session. The Learning Mentor is responsible for monitoring the student's learning environment and daily academic progress. Learning Mentors are trained to monitor the students, communicate with the teachers, and manage school at home. The LM is trained to create an hourly daily schedule for his/her student. The LM guides the student on how to follow the schedule and ensures that the student works on coursework for four to six hours a day, five times a week. The student works with his/her LM every day to follow the course work assignments. Depending on the student's maturity level, the LM gradually teaches the student how to pace himself/herself to work independently, but always continues to monitor the student's daily progress.

Role of the Student

Parents and students develop a greater respect for each other as they work together at managing a full-time public school in their home. The student is made aware of the responsibilities, and the parent or designated Learning Mentor monitors the student every day. The student is responsible for completing the daily assignments and following a daily schedule while learning the standards and applying the concepts. Every day, students will build on the knowledge of the prior day and strengthen their understanding. If applicable, the student should conduct research and utilize appropriate source citation, quoting and paraphrasing to avoid plagiarism. It is the responsibility of all students to demonstrate their knowledge by submitting their work, studying, focusing on future endeavors, and earning the grades for promotion and graduation. An academic integrity incident will not be tolerated.

General Characteristics of Successful Virtual Students:

- self-motivated
- history of adequate attendance
- history of successfully meeting grade level/course expectations

K-12 Virtual specializes in a technology-driven education that requires self-motivated, organized students and parents to manage a public school from home or another venue. If at any time, a student is not successfully performing in the virtual setting, a meeting will be scheduled to determine the next steps for the student.

Academics

Kindergarten - 5th Grade:

Students will be enrolled in four online courses with one certified elementary teacher. The teacher will assign daily assignments in each of the four subjects (English/Language Arts (ELA), Math, Science, and Social Studies).

The Learning Mentor will be responsible for creating the daily schedule ensuring approximately an hour for each subject every day. The Learning Mentor will organize the assignments and be ready for the next school day guiding the student through the lessons in each subject. The Learning Mentor will review the student's work and supervise attendance/participation.

The teacher will schedule weekly live classes in each subject and grade level per participation and will schedule individual sessions to review each student's progress. The teacher will evaluate the assignments for an official grade. Grades will be entered in PowerSchool. Students and parents will be able to access PowerSchool for updates on student progress. Students are required to log 20 hours per week on the SchoolsPLP or online platform.

6th - 8th Grade:

Students will be enrolled in four online courses with a teacher for each of the content areas (ELA, Math, Science, and Social Studies). The Learning Mentor is responsible for the same duties as described in the K-5th grade section above.

9th - 12th Grade:

Students will have a minimum of six online courses with six teachers certified in their respective subject areas. The Learning Mentor will be responsible for creating the daily schedule, assisting in organizing the student each day, and ultimately teaching the student time management and responsibility. The Learning Mentor for students in 9th-12th grade is responsible for monitoring participation in the system every day, reviewing assignments by each of the teachers, and assuring the student has completed them successfully.

The teacher will schedule weekly live classes in each subject with all the students in the course and regularly scheduled individual sessions to review the student's progress.

As a school of choice, CMCSS K-12 Virtual does not offer every educational service a zoned school may offer in a traditional setting. Case reviews will be utilized to determine if the student's needs can be met in the virtual setting.

CMCSS K-12 Virtual does not have athletic teams like football, volleyball, or basketball, etc.; however, students in the program may try out for an athletic team at their zoned school. CMCSS K-12 Virtual is approved by the NCAA, allowing K-12 Virtual students to be eligible for athletic scholarships.

Sample Course Offerings

9th Grade

- ENGLISH I
- ALGEBRA I
- PHYSICAL SCIENCE
- WORLD HISTORY/GEOGRAPHY
- LIFETIME WELLNESS
- ART

10th Grade

- ENGLISH II
- GEOMETRY
- BIOLOGY
- GOVERNMENT/PE
- SPANISH I
- CAREER EXPLORATION

11th Grade

- ENGLISH III
- ALGEBRA II
- CHEMISTRY
- US HISTORY/GEOGRAPHY
- SPANISH II
- ACT PREP

12th Grade

- ENGLISH IV
- BRIDGE/STATS
- PERSONAL FINANCE/ECON
- CAPSTONE

Removal of the Hybrid Model

Previous plans included a hybrid model as a component of the Continuum of Learning. After reviewing feedback from stakeholders and considering the district's ability to effectively and efficiently implement the hybrid model with ever-changing circumstances, the CDT decided to consolidate the Continuum of Learning to only the traditional and remote models. The major areas of concern with the hybrid model included childcare, coordinating schedules for blended families, operational efficiencies, and staffing, in addition to other issues.

Reopening Plan in Review

The safety and health of students, employees, and the entire community is the first priority.

Due to the ever-changing circumstances and evolving research and guidance regarding COVID-19, the CMCSS Communicable Disease Team has prepared the district for a Continuum of Learning: Traditional and Remote.

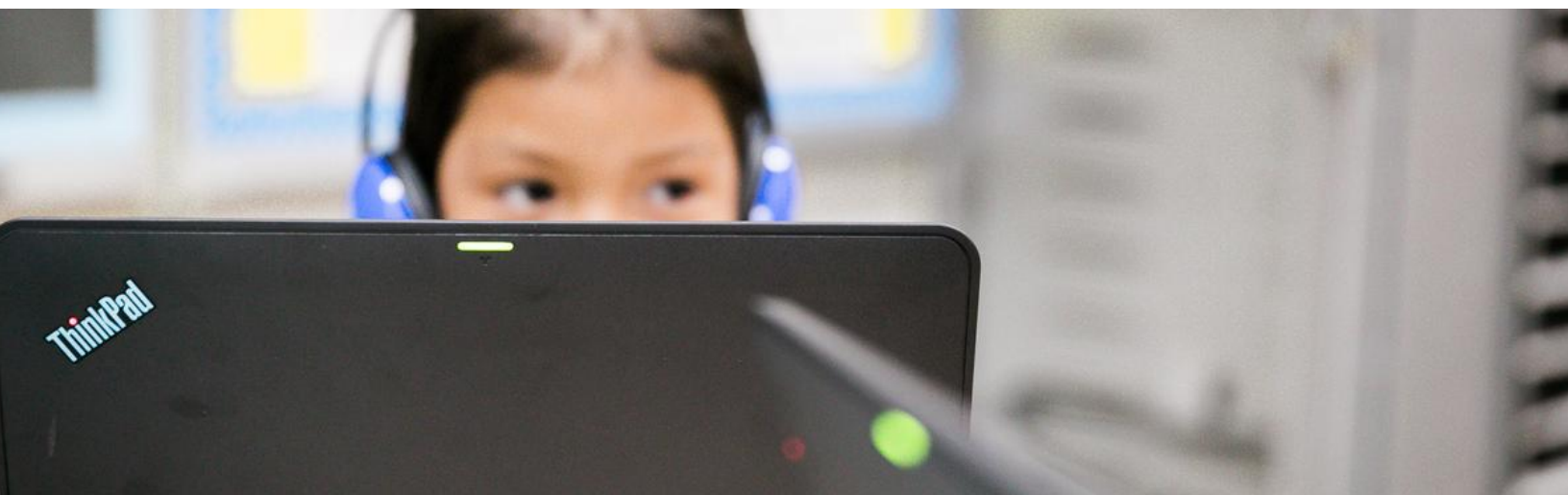
CMCSS' plans will ensure that the district is prepared to continue providing a high-quality education for all students no matter the circumstances.

Although the CDT has recommended a traditional model for reopening schools, at any point during the academic year, CMCSS may need to switch the entire district or individual schools in or out of traditional and remote models based on the circumstances of the pandemic.

Due to the ever-changing circumstances of the pandemic, parents and guardians should make preparations throughout the year in the event that school buildings are closed and remote learning must take place.

Decisions continue to be based on the level of community spread and the district's ability to adhere to laws, policies, and guidelines.

All parents/guardians will have the option to enroll their child in CMCSS K-12 Virtual, a school of choice taught by CMCSS teachers and provided at no cost to families.



Resources

A playbook for reopening public schools during the COVID-19 pandemic does not exist. Additionally, there is no one-size-fits-all guidance. The following are just a few of the many resources or agencies that the CDT has consulted for planning:

[American Academy of Pediatrics](#)

[Baltimore City Schools Continuity of Learning Plan](#)

[Centers for Disease Control \(CDC\)](#)

[Chiefs for Change](#)

[Federal Emergency Management Association \(FEMA\)](#)

[Georgia Department of Education](#)

[Maryland State Department of Education](#)

[Metro Nashville Framework](#)

[Miami-Dade County Public Schools Instructional Continuity Plan](#)

[National Institute for Excellence in Teaching \(NIET\)](#)

[National School Public Relations Association \(NSPRA\)](#)

[State Collaborative on Reforming Education \(SCORE\)](#)

[Tennessee Department of Education School Reopening Toolkits](#)

[Tennessee Department of Health](#)

[Tennessee Education Research Alliance \(TERA\)](#)

[TNTP Learning Acceleration Guide](#)

Other federal, state, and local orders will be taken into consideration as they are released.

