



Planning for the Future

2021/2022

Board of Education Meeting

01/04/22



RSP & Associates Introduction



RSP Quick Facts:

- ❑ Founded in 2003
- ❑ Professional educational planning firm
- ❑ Expertise in multiple disciplines
- ❑ Over 20 years of planning experience
- ❑ Over 80 years of education experience
- ❑ Over 20 years of GIS experience
- ❑ Projection accuracy of 97% or greater

Company was started with the desire and commitment to assist school districts in long-range planning.

RSP has served over **130** clients in: Arkansas, Colorado, Iowa, Illinois, Kansas, Minnesota, Missouri, Nebraska, North Dakota, Oklahoma, Tennessee, and Wisconsin.

RSP Projects in last year:

SD 308 Unit Community Unit School District

- Enrollment Analysis

CCSD #15

- Enrollment Analysis
- Facilitation of Attendance Area Changes (By Strands)

Lake Zurich District #95

- Enrollment Analysis
- Facilitation of Attendance Area Changes

Rockford Public Schools

- Enrollment Analysis
- Building Utilization
- Attendance Area Changes (By Strands)

RSP Leadership:

Robert Schwarz, AICP, CEFP

- Military, County, City, and School District Planner
- Kansas University - Master of Urban Planning (MUP)
- American Institute of Certified Planners (AICP)
- Certified Educational Facility Planner (CEFP)

Our Partners:



Acknowledgment

RSP & Associates wants to thank all that assisted in the creation and analysis of this study! Specifically,

- Clarksville-Montgomery Community School System
- City of Clarksville
- Montgomery County
- State of Tennessee GIS
- Census Bureau/Esri

A special thank you **CMCSS Zoning Team** and all of their hard work in this process!



Part 1

Enrollment and Projections

Current Elementary Boundaries

5



Clarksville-Montgomery County School System Current Elementary Boundaries



Elementary Schools

- 1 Barkers Mill
- 2 Barksdale
- 3 Burt *
- 4 Byrns L. Darden
- 5 Carmel
- 6 Cumberland Heights
- 7 East Montgomery
- 8 Glenellen
- 9 Hazelwood
- 10 Kenwood
- 11 Liberty
- 12 Minglewood
- 13 Montgomery Central
- 14 Moore
- 15 Norman Smith
- 16 Northeast
- 17 Oakland
- 18 Pisgah
- 19 Ringgold
- 20 Rossview
- 21 St. Bethlehem *
- 22 Sango
- 23 West Creek
- 24 Woodlawn

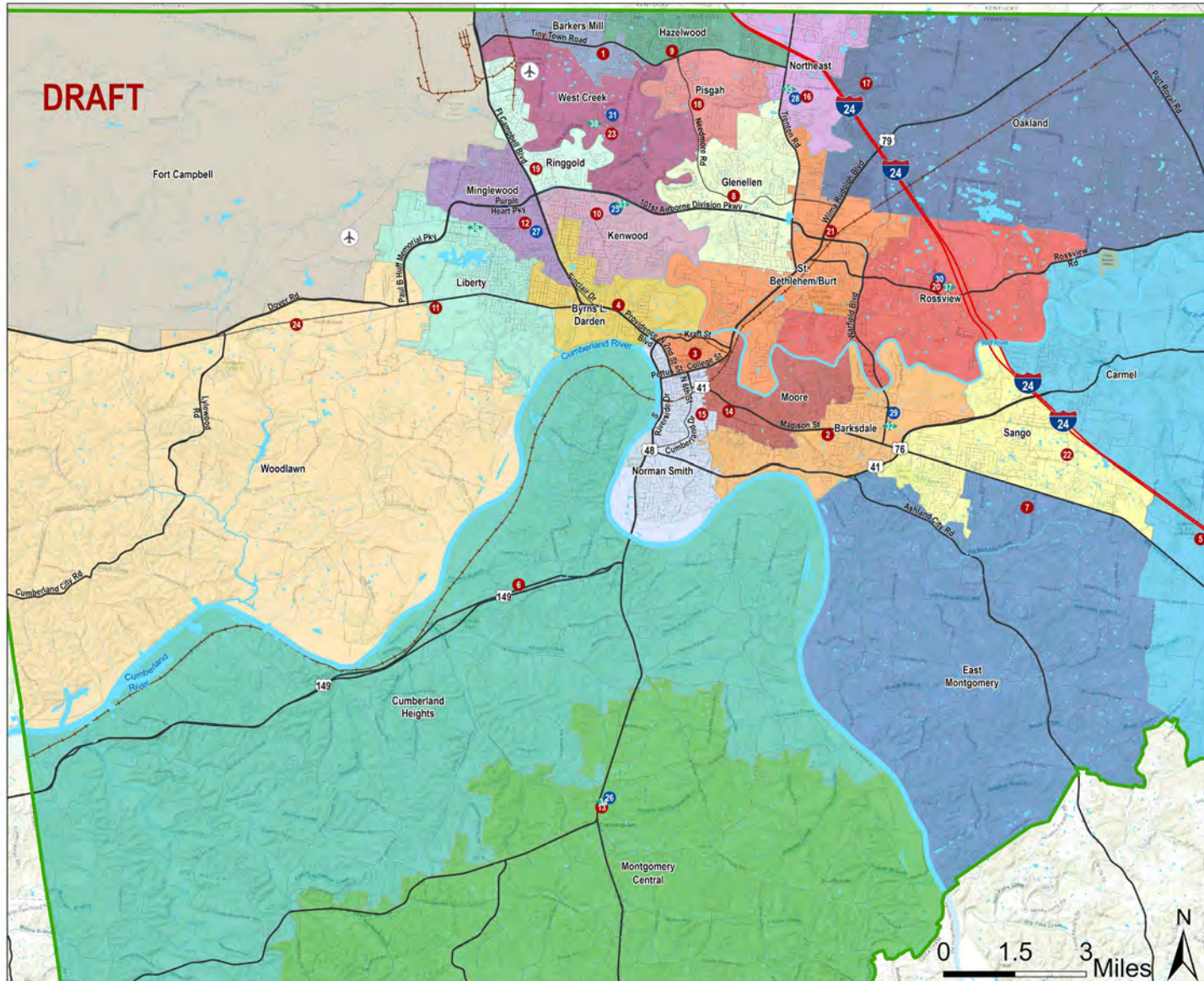
Middle Schools

- 25 Kenwood
- 26 Montgomery Central
- 27 New Providence
- 28 Northeast
- 29 Richview
- 30 Rossview
- 31 West Creek

High Schools

- 32 Clarksville
- 33 Kenwood
- 34 Montgomery Central
- 35 Northeast
- 36 Northwest
- 37 Rossview
- 38 West Creek

- Type of School
- Elementary
 - Middle
 - High
 - School Boundary
 - Water
- Elementary Attendance Areas
- Barkers Mill Elementary
 - Barksdale Elementary
 - Burt Elementary
 - Byrns L. Darden Elementary
 - Carmel Elementary
 - Cumberland Heights Elementary
 - East Montgomery Elementary
 - Glenellen Elementary
 - Hazelwood Elementary
 - Kenwood Elementary
 - Liberty Elementary
 - Minglewood Elementary
 - Montgomery Central Elementary
 - Moore Elementary
 - Norman Smith Elementary
 - Northeast Elementary
 - Oakland Elementary
 - Pisgah Elementary
 - Ringgold Elementary
 - Rossview Elementary
 - Sango Elementary
 - St. Bethlehem Elementary
 - West Creek Elementary
 - Woodlawn Elementary



Map data provided by
Montgomery County, City of
Clarksville, CMCSS, US
Census Bureau, and ESRI.
Map created December 2021.

5

Current Secondary Boundaries: Map

6



Clarksville-Montgomery County School System Current Secondary Boundaries

DRAFT



Updated 12/10/2021

Elementary Schools

- 1 Barkers Mill
- 2 Barksdale
- 3 Burt *
- 4 Byrns L. Darden
- 5 Carmel
- 6 Cumberland Heights
- 7 East Montgomery
- 8 Glenellen
- 9 Hazelwood
- 10 Kenwood
- 11 Liberty
- 12 Minglewood
- 13 Montgomery Central
- 14 Moore
- 15 Norman Smith
- 16 Northeast
- 17 Oakland
- 18 Pisgah
- 19 Ringgold
- 20 Rossview
- 21 St. Bethlehem *
- 22 Sango
- 23 West Creek
- 24 Woodlawn

Middle Schools

- 25 Kenwood
- 26 Montgomery Central
- 27 New Providence
- 28 Northeast
- 29 Richview
- 30 Rossview
- 31 West Creek

High Schools

- 32 Clarksville
- 33 Kenwood
- 34 Montgomery Central
- 35 Northeast
- 36 Northwest
- 37 Rossview
- 38 West Creek

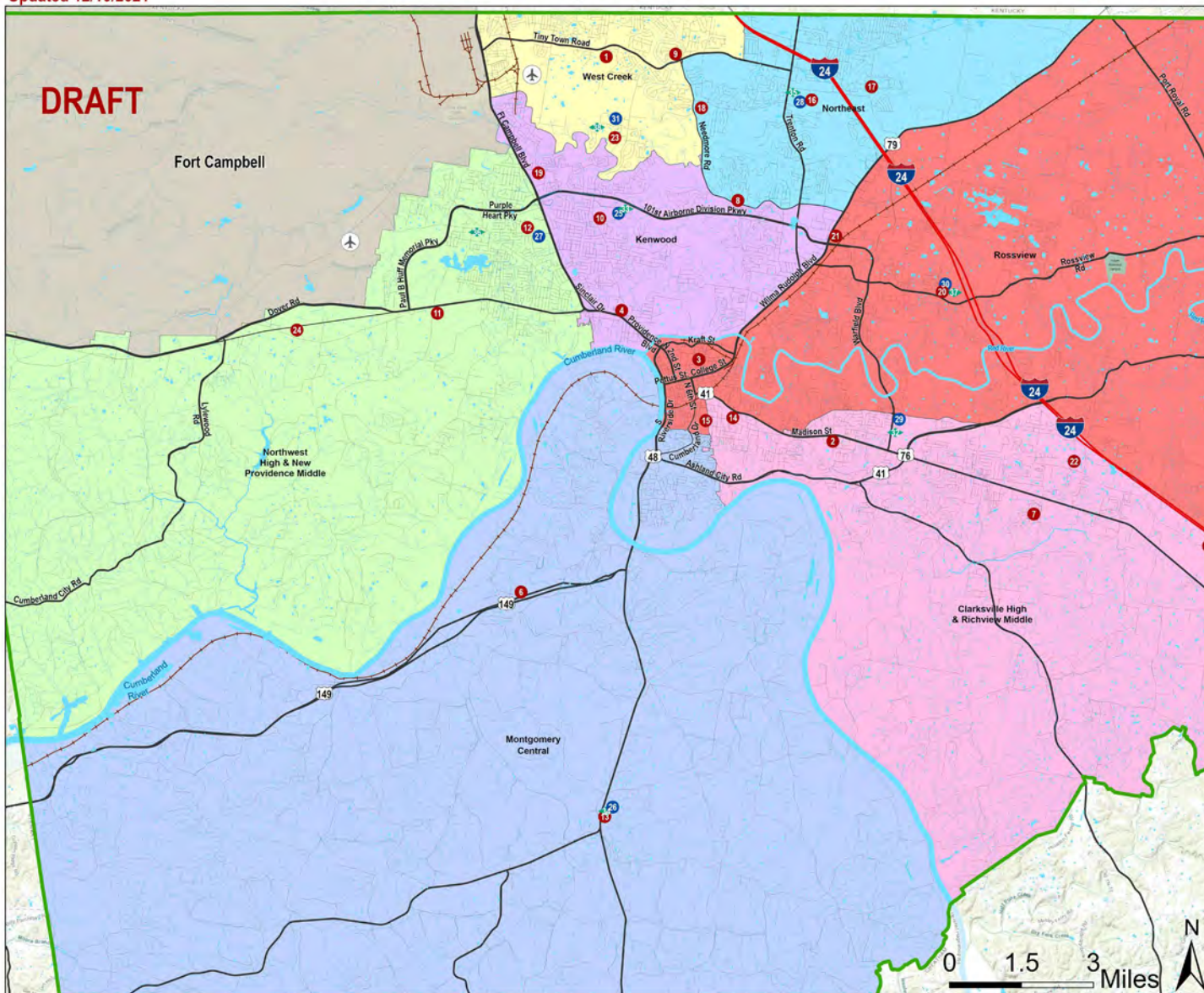
Type of School

- Elementary
- Middle
- High
- ▬ District Boundary
- ✈ Airports

Secondary Boundaries

- Clarksville High & Richview Middle
- Kenwood
- Montgomery Central
- Northeast
- Northwest High & New Providence Middle
- Rossview
- West Creek
- Fort Campbell
- Kirkwood Campus

Map data provided by
Montgomery County, City of
Clarksville, CMCSS, US
Census Bureau, and ESRI.
Map created December 2021.



6

Sophisticated Forecast Model (SFM)

Built-Out $S_{c,t,x} = S_{c-1,t-1,x} * GC$

Let:

- S = The number of students, either an actual count or a projected count
- x = A subscript denoting an attendance area in the School District
- c = Grade level
- t = Time (Years)
- GC = Growth component either modeling enrollment increase or decrease based on historical information, expressed as a real number

Developing $S_{c,t,x} = S_{c-1,t-1,x} + (BP_{t,x} * R_{c,x})$

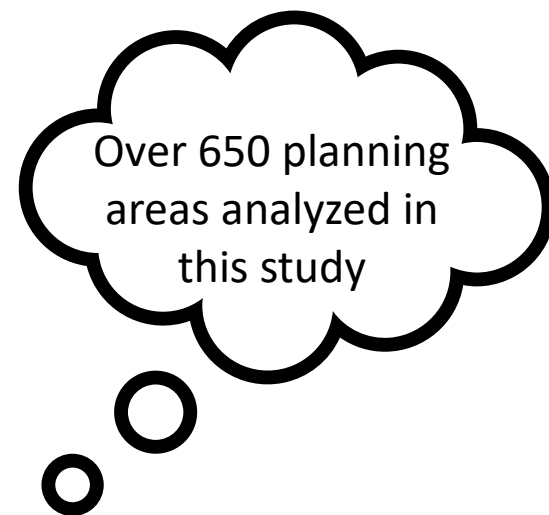
Where: $BP_{t,x} = \left(\frac{(CP_x)(BT_x)(A_x)}{\sum_x (CP_x)(BT_x)(A_x)} \right) * CT$

Let:

- S = The number of students, either an actual count or a projected count
- x = A subscript denoting an attendance area in the School District
- c = Grade level
- t = Time (Years)
- BP = Building permit forecast as given by the Building Permit Allocation Model (BPAM) model
- R_{c,x} = Student enrollment ratio of cohort c in planning area x
- CP = Capacity of a planning area as expressed by available housing units
- BT = Building history trend of a planning area
- A = An index which models the likelihood of development
- CT = Building permit control total forecast

This is the **central focus** of everything RSP does.

The model is based on what is happening in a school district. The best data is statistically analyzed to provide an accurate enrollment forecast. The District will be able to use RSP's report and maps to better understand demographic trends, school utilization, and the timing of construction projects.



Planning Areas Map

Clarksville-Montgomery County School System Planning Areas



Elementary Schools

- 1 Barkers Mill
- 2 Barksdale
- 3 Burt *
- 4 Byrns L. Darden
- 5 Carmel
- 6 Cumberland Heights
- 7 East Montgomery
- 8 Glenellen
- 9 Hazelwood
- 10 Kenwood
- 11 Liberty
- 12 Minglewood
- 13 Montgomery Central
- 14 Moore
- 15 Norman Smith
- 16 Northeast
- 17 Oakland
- 18 Pisgah
- 19 Ringgold
- 20 Rossview
- 21 St. Bethlehem *
- 22 Sango
- 23 West Creek
- 24 Woodlawn

Middle Schools

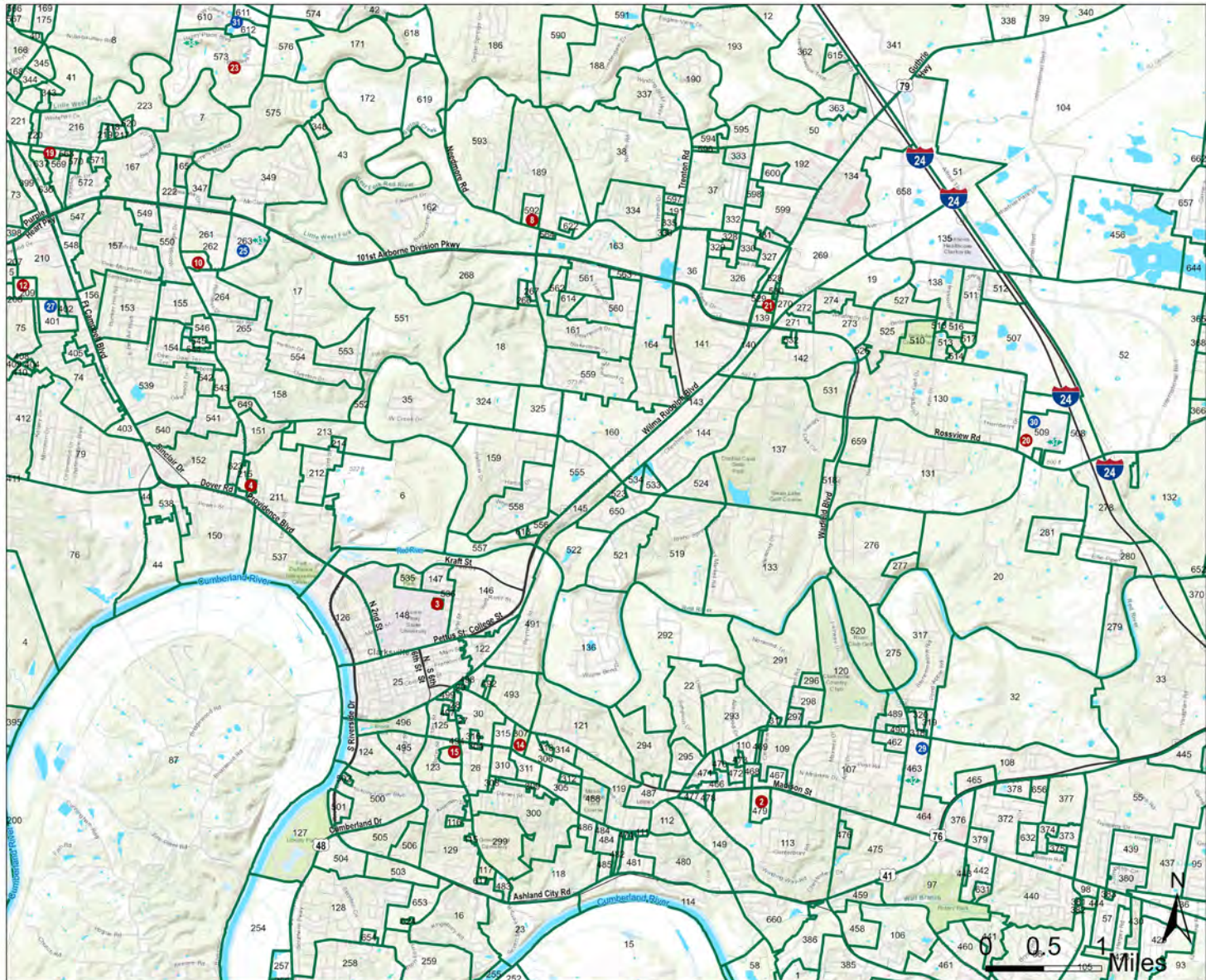
- 25 Kenwood
- 26 Montgomery Central
- 27 New Providence
- 28 Northeast
- 29 Richview
- 30 Rossview
- 31 West Creek

High Schools

- 32 Clarksville
- 33 Kenwood
- 34 Montgomery Central
- 35 Northeast
- 36 Northwest
- 37 Rossview
- 38 West Creek

Type of School

- Elementary
- Middle
- High
- District Boundary
- ✈ Airports
- Fort Campbell
- Kirkwood Campus
- Planning Areas



Map data provided by
Montgomery County, City of
Clarksville, CMCSS, US
Census Bureau, and ESRI.
Map created December 2021.

Enrollment

Enrollment By Grade - (Reside/Attend and Out District/Attend)

Year	PK	K	1st	2nd	3rd	4th	5th	6th	7th	8th	9th	10th	11th	12th	K-12 Total	PK-12 Total
2015/16	542	2,668	2,641	2,699	2,687	2,626	2,520	2,252	2,258	2,397	2,426	2,352	2,108	2,097	31,731	32,273
2016/17	588	2,805	2,758	2,645	2,781	2,690	2,625	2,572	2,289	2,335	2,634	2,337	2,305	2,168	32,944	33,532
2017/18	561	2,918	2,913	2,775	2,738	2,858	2,783	2,710	2,674	2,386	2,537	2,478	2,307	2,339	34,416	34,977
2018/19	571	2,845	2,959	2,799	2,744	2,727	2,862	2,817	2,729	2,667	2,664	2,341	2,350	2,369	34,873	35,444
2019/20	725	3,079	2,845	2,970	2,815	2,839	2,801	2,955	2,843	2,820	2,945	2,417	2,210	2,446	35,985	36,710
2020/21	682	2,722	2,999	2,767	2,900	2,788	2,798	2,813	2,929	2,921	3,102	2,687	2,263	2,329	36,018	36,700
2021/22	644	3,055	2,906	3,017	2,870	2,934	2,833	2,843	2,844	2,951	3,261	2,821	2,451	2,363	37,149	37,793

Source: CMCSS Student Data from 2017/18 to 2021/22 (All students to include In District who attend and Out of District School who attend)

Change By Grade from the Previous Year (Reside/Attend and Out District/Attend)

From	To	PK	PK K	K 1st	1st 2nd	2nd 3rd	3rd 4th	4th 5th	5th 6th	6th 7th	7th 8th	8th 9th	9th 10th	10th 11th	11th 12th	PK-12 Change	
																Total	Percent
2015/16	2016/17	46	2,263	90	4	82	3	-1	52	37	77	237	-89	-47	60	1,259	4.0%
2016/17	2017/18	-27	2,330	108	17	93	77	93	85	102	97	202	-156	-30	34	1,445	4.4%
2017/18	2018/19	10	2,284	41	-114	-31	-11	4	34	19	-7	278	-196	-128	62	467	1.4%
2018/19	2019/20	154	2,508	0	11	16	95	74	93	26	91	278	-247	-131	96	1,266	3.6%
2019/20	2020/21	-43	1,997	-80	-78	-70	-27	-41	12	-26	78	282	-258	-154	119	-10	0.0%
2020/21	2021/22	-38	2,373	184	18	103	34	45	45	31	22	340	-281	-236	100	1,093	3.0%
3-Yr Avg		24.3	2,292.7	34.7	-16.3	16.3	34.0	26.0	50.0	10.3	63.7	300.0	-262.0	-173.7	105.0	783.0	2.2%
3-Yr Weighted Avg		-7.7	2270.2	65.3	-15.2	30.8	23.8	21.2	42.0	11.2	52.2	310.3	-267.7	-191.2	105.7	754.2	2.1%

Source: CMCSS Student Data from 2017/18 to 2021/22 (All students to include In District who attend and Out of District School who attend)

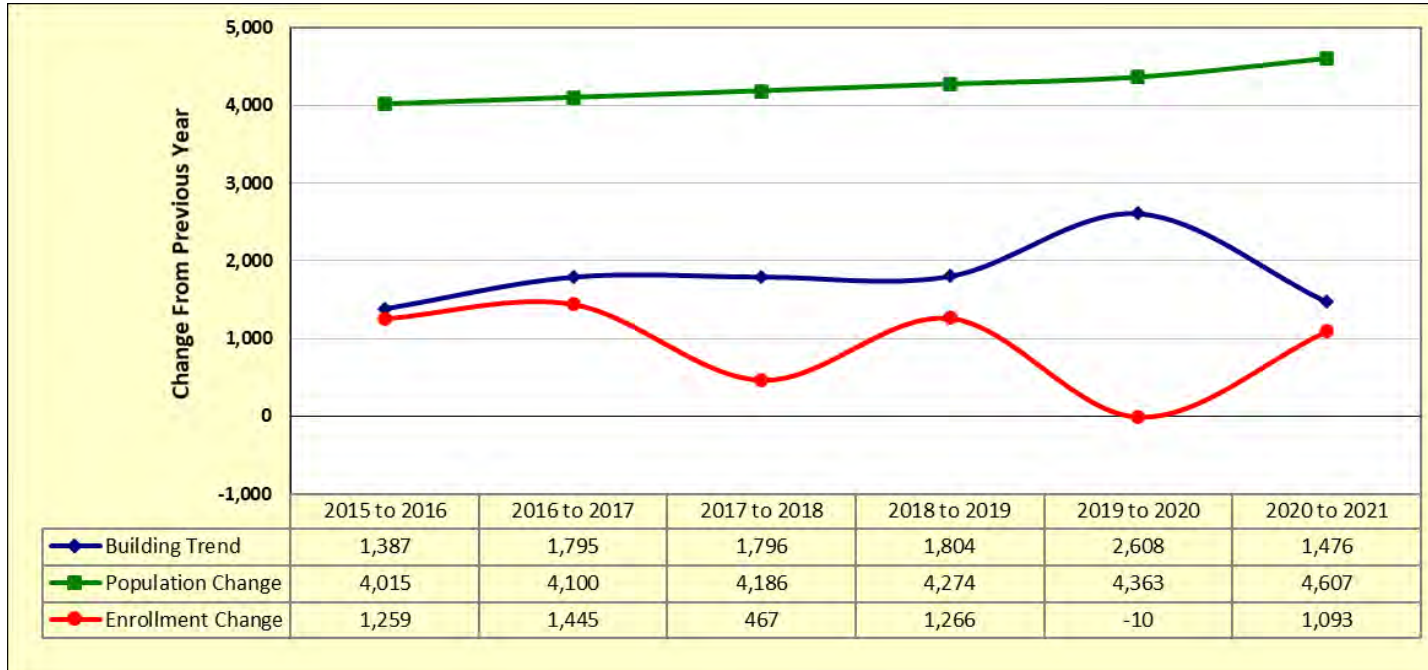
Kdg to Kdg Change

113

Observations:

- Largest class in 2021/22 is the 9th grade with 3,261 students
- Smallest class in 2021/22 is the 12th grade with 2,363 students
- Kindergarten enrollment saw an increase from 2020/21 of 333 students
- Typically, when Kindergarten is greater than the previous year 12th graders that translates into student enrollment growth
- District-wide enrollment saw an increase from 2020/21 of 1,131 students

Population/Building/Enrollment



Source: Census, Montgomery County City of Clarksville, CMCSS and RSP SFM & Demographic Models

Graphic Explanation:

- Graph shows information about building occupancy, population growth, and district enrollment
- Census data indicates an increasing population (Future annual growth of 1.86%)
- 2019/2020 saw a decrease in enrollment, likely due to the COVID-19 pandemic
- Building activity is significant and anticipated to continue over the next five years
- New development results in more people and more students

Heat Map

Updated 01/05/22



Clarksville-Montgomery County School System Student "Heat" Density in 2021/22 in Grades K-12



Elementary Schools

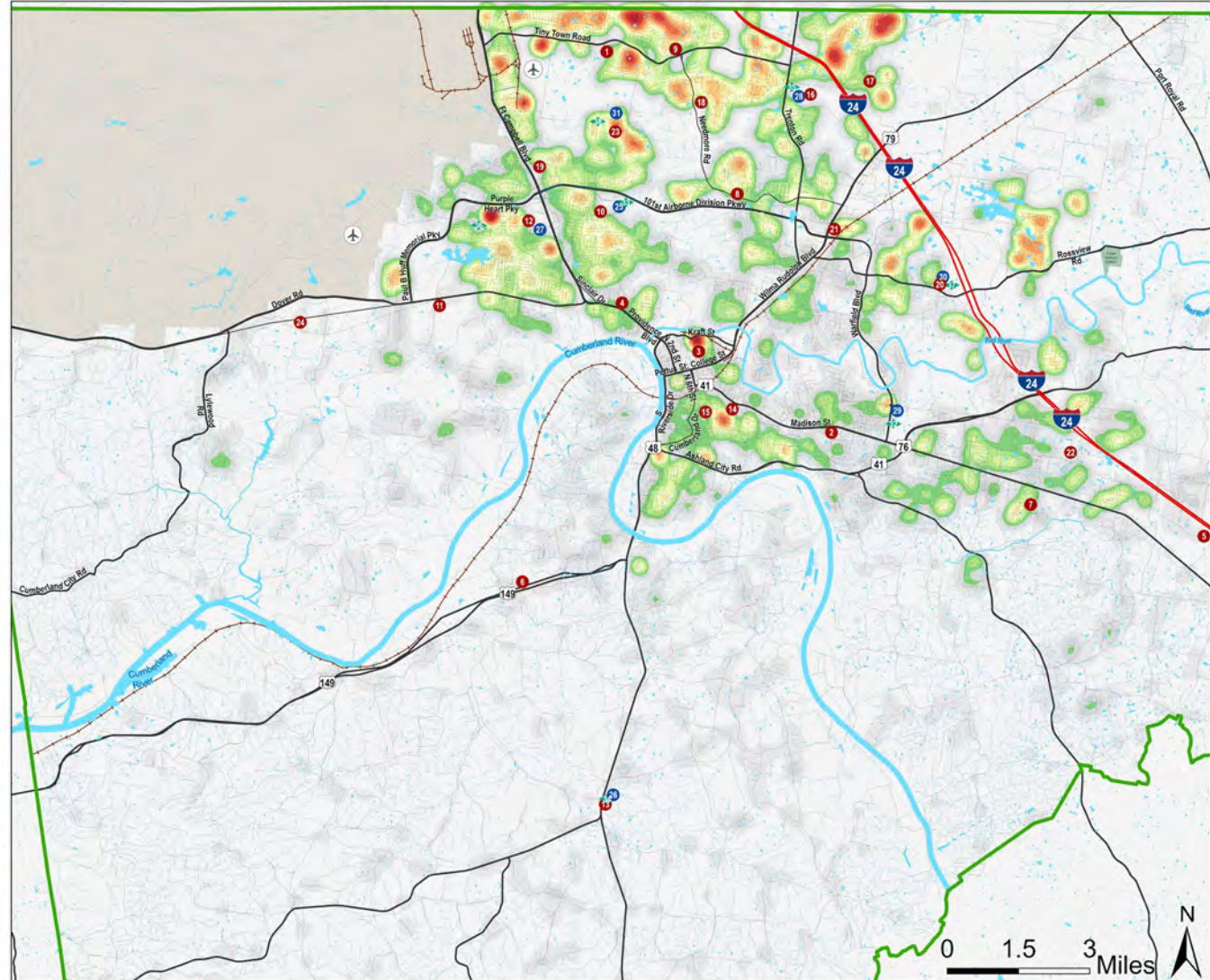
- 1 Barkers Mill
 - 2 Barksdale
 - 3 Burt *
 - 4 Byrns L. Darden
 - 5 Carmel
 - 6 Cumberland Heights
 - 7 East Montgomery
 - 8 Glenellen
 - 9 Hazelwood
 - 10 Kenwood
 - 11 Liberty
 - 12 Minglewood
 - 13 Montgomery Central
 - 14 Moore
 - 15 Norman Smith
 - 16 Northeast
 - 17 Oakland
 - 18 Pigah
 - 19 Ringgold
 - 20 Rossvie
 - 21 St. Bethlehem *
 - 22 Sango
 - 23 West Creek
 - 24 Woodlawn
- ### Middle Schools
- 25 Kenwood
 - 26 Montgomery Central
 - 27 New Providence
 - 28 Northeast
 - 29 Richview
 - 30 Rossvie
 - 31 West Creek
- ### High Schools
- 32 Clarksville
 - 33 Kenwood
 - 34 Montgomery Central
 - 35 Northeast
 - 36 Northwest
 - 37 Rossvie
 - 38 West Creek

- Type of School
- Elementary
 - Middle
 - High
 - ▭ District Boundary
 - ✈ Airports
 - Fort Campbell
 - Kirkwood Campus

- Student Density
- Low Density
 - High Density

Student "Heat" is determined by calculating the number of students that are clustered within close proximity of one another. Overlapping of points (2 or more students residing at the same address) are handled using a weighting of coincident points. This weighted data is calculated by relational distance, which helps to visually depict the areas of high student clustering.

Map data provided by Montgomery County, City of Clarksville, CMCSS, US Census Bureau, and ESRI. Map created January 2022.



Map shows the location of students in proximity to other students for a "heat affect" in the district.

Red areas depict highest density of students

Gray as lowest student density

Overlapping points (2 or more students) are handled using a weighting of coincident points

Newer developments and/or most affordable areas tend to have the greatest density

Growth Map

Clarksville-Montgomery County School System Growth Areas and Current Secondary Boundaries



Elementary Schools

- 1 Barkers Mill
- 2 Barksdale
- 3 Burt *
- 4 Byrns L. Darden
- 5 Carmel
- 6 Cumberland Heights
- 7 East Montgomery
- 8 Glenellen
- 9 Hazelwood
- 10 Kenwood
- 11 Liberty
- 12 Minglewood
- 13 Montgomery Central
- 14 Moore
- 15 Norman Smith
- 16 Northeast
- 17 Oakland
- 18 Pisgah
- 19 Ringgold
- 20 Rossview
- 21 St. Bethlehem *
- 22 Sango
- 23 West Creek
- 24 Woodlawn

Middle Schools

- 25 Kenwood
- 26 Montgomery Central
- 27 New Providence
- 28 Northeast
- 29 Richview
- 30 Rossview
- 31 West Creek

High Schools

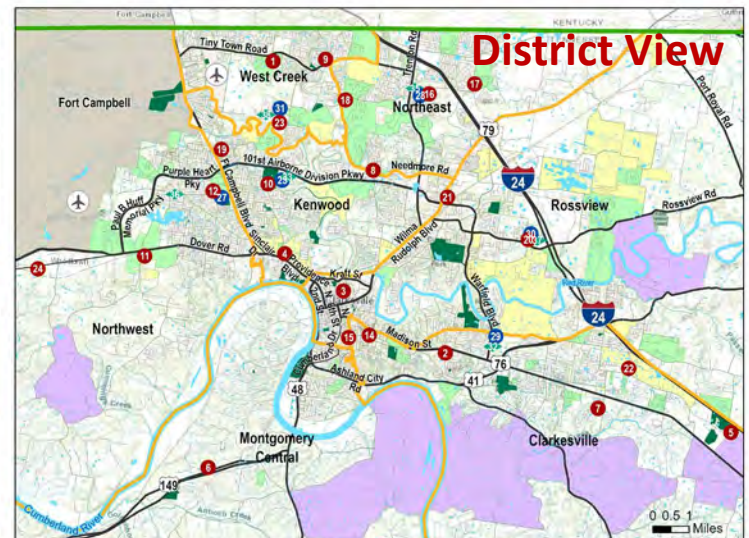
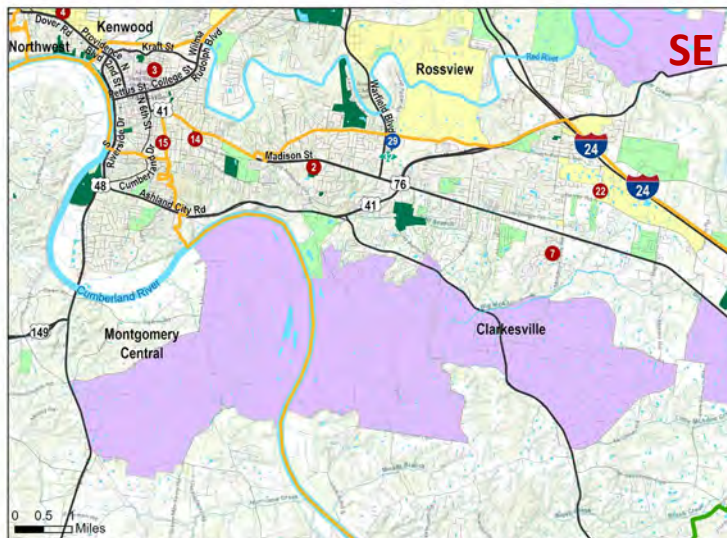
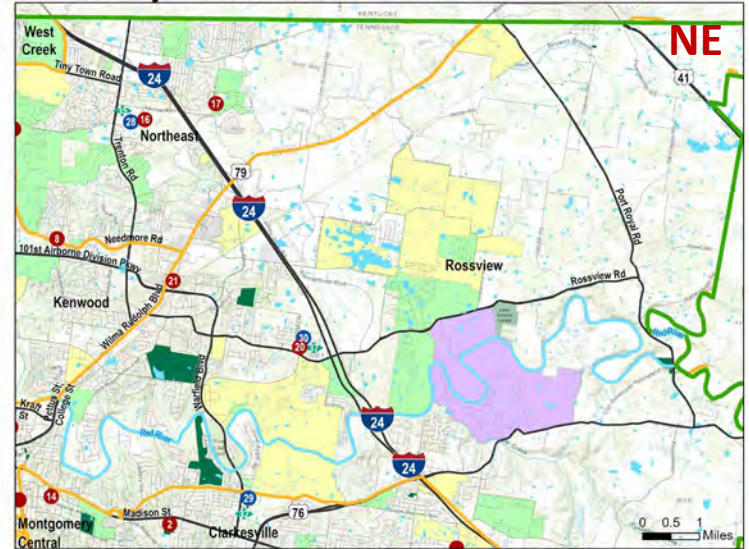
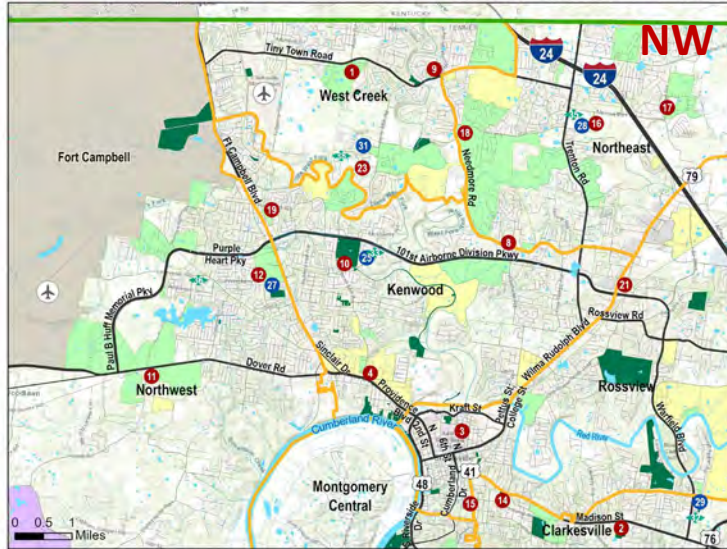
- 32 Clarksville
- 33 Kenwood
- 34 Montgomery Central
- 35 Northeast
- 36 Northwest
- 37 Rossview
- 38 West Creek

Type of School

- Elementary
- Middle
- High
- District Boundary
- ✈ Airports
- Fort Campbell
- Kirkwood Campus
- Planning Areas

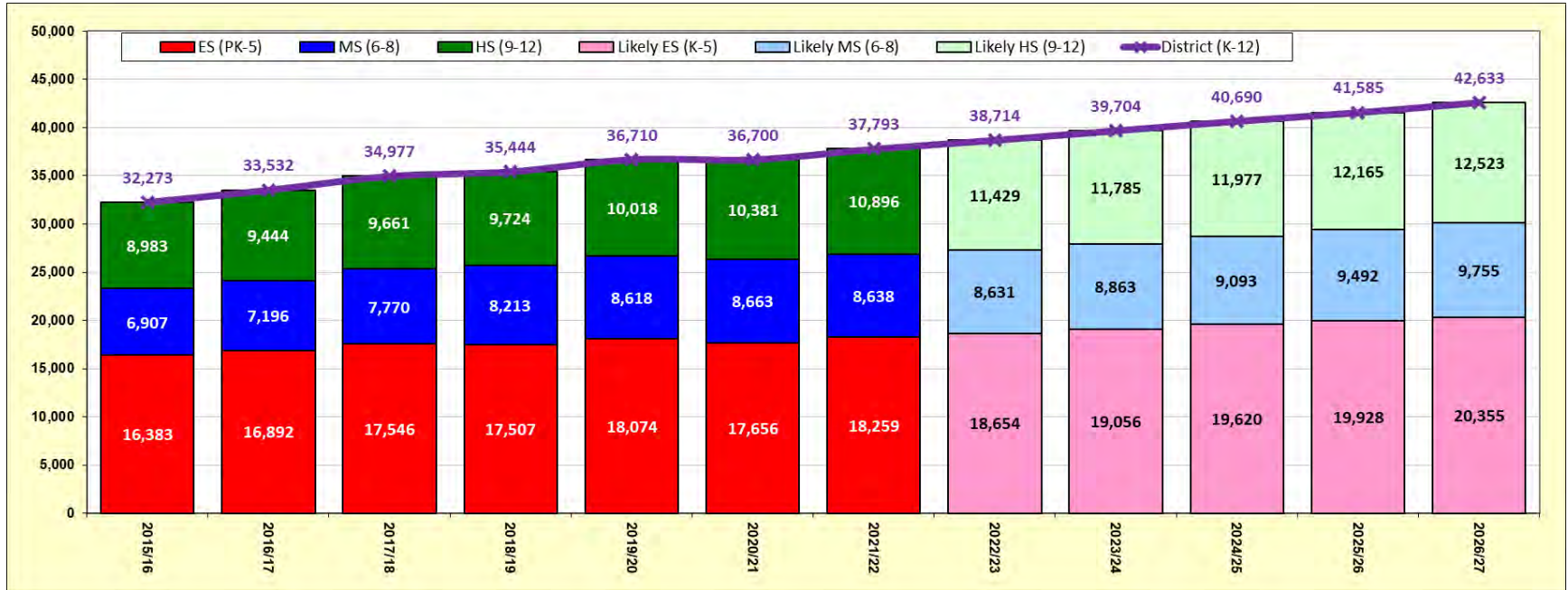
Growth Areas

- Current
- 5 Year
- 10 Year



Map data provided by Montgomery County, City of Clarksville, CMCSS, US Census Bureau, and ESRI.
Map created December 2021.

Projections



Overall Enrollment

- District increases by over 4,800 students
- District expected to continue to increase

Elementary

- Increases by over 2,000 students

Middle School

- Increases by over 1,000 students

High School

- Increases by over 1,600 students

Projection Notes Information

- Past Enrollment is shown three different ways:
 1. Reside (Based on where a student Resides in relation to the attendance area – includes Open Enrollment)
 2. Attend (Based on what school the student is attending includes Open Enrollment)
 3. Reside/Attend (Subset of Reside to know how many of the Reside attend the school based on the attendance area they are assigned to)
- Projections are shown two ways:
 1. Reside (Based on where a student Resides in relation to the attendance area: Includes Open Enrollment)
 2. Attend (Based on what school the student is attending includes Open Enrollment)
- Capacity
 - Provided by district administration
 - Should be annually examined to ensure appropriate education space is available
 - Kirkwood schools will be integrated into the analysis during the boundary analysis
- Other Items
 - Enrollment Grade Configuration in Student Forecast Model (PK-5, 6-8, 9-12)
 - Open enrollment trends are assumed to follow district policy and will continue like those trends during the

Elementary Projections

School	Capacity		Student Location	Past School Enrollment			Projected Reside and Attend Enrollment					Projected Reside & Attend Adjusted Capacity%				
	No Portable	Portable		2019/20	2020/21	2021/22	2022/23	2023/24	2024/25	2025/26	2026/27	2022/23	2023/24	2024/25	2025/26	2026/27
Barkers Mill Elementary			Reside/Attend	911	897	914										
West Creek	1,040	1,150	Reside	999	988	1,006	1,008	990	1,008	998	986	87.7%	86.1%	87.7%	86.8%	85.7%
Grades PK-5			Attend	1,006	981	983	979	972	990	980	968	85.1%	84.6%	86.1%	85.2%	84.2%
Barksdale Elementary			Reside/Attend	482	437	451										
Clarksville	627	737	Reside	568	513	539	538	538	528	518	537	73.0%	73.0%	71.6%	70.3%	72.9%
Grades PK-5			Attend	609	600	647	705	639	629	619	638	95.7%	86.7%	85.3%	84.0%	86.6%
Burt Elementary			Reside/Attend	312	332	291										
Kenwood & Rossvie	431	431	Reside	425	421	387	411	437	480	492	500	95.4%	101.4%	111.4%	114.2%	116.0%
Grades 3-5			Attend	341	352	330	356	376	419	431	439	82.6%	87.2%	97.2%	100.0%	101.9%
Byrns L. Darden Elementary			Reside/Attend	554	518	503										
Kenwood	759	759	Reside	641	580	558	563	578	580	585	584	74.2%	76.2%	76.4%	77.1%	76.9%
Grades PK-5			Attend	617	585	542	540	569	571	576	575	71.1%	75.0%	75.2%	75.9%	75.8%
Carmel Elementary			Reside/Attend	593	549	535										
Clarksville & Rossvie	842	842	Reside	657	612	605	639	619	619	604	593	75.9%	73.5%	73.5%	71.7%	70.4%
Grades PK-5			Attend	699	673	626	622	653	653	638	627	73.9%	77.6%	77.6%	75.8%	74.5%
Cumberland Heights Elementary			Reside/Attend	562	553	544										
Montgomery Central	825	825	Reside	679	667	661	663	657	653	642	638	80.4%	79.6%	79.2%	77.8%	77.3%
Grades PK-5			Attend	635	616	579	601	585	581	570	566	72.8%	70.9%	70.5%	69.1%	68.6%
East Montgomery Elementary			Reside/Attend	604	551	597										
Clarksville	842	842	Reside	705	650	687	691	705	717	726	770	82.1%	83.7%	85.2%	86.2%	91.4%
Grades PK-5			Attend	679	631	659	671	680	692	701	745	79.7%	80.8%	82.2%	83.3%	88.5%
Glenellen Elementary			Reside/Attend	1,011	941	957										
Northeast	1,089	1,177	Reside	1,145	1,085	1,092	1,093	1,113	1,129	1,150	1,199	92.9%	94.6%	95.9%	97.7%	101.9%
Grades PK-5			Attend	1,123	1,041	1,025	1,051	1,054	1,070	1,091	1,140	89.3%	89.5%	90.9%	92.7%	96.8%
Hazelwood Elementary			Reside/Attend	886	862	876										
Northwest & West Creek	842	1,040	Reside	987	979	987	926	927	908	908	900	89.0%	89.1%	87.3%	87.3%	86.5%
Grades K-5			Attend	942	933	913	886	862	843	843	835	85.2%	82.9%	81.1%	81.1%	80.3%
Kenwood Elementary			Reside/Attend	639	588	618										
Kenwood	842	842	Reside	708	647	687	696	702	724	726	729	82.7%	83.4%	86.0%	86.2%	86.6%
Grades PK-5			Attend	740	692	692	686	720	742	744	747	81.5%	85.6%	88.2%	88.4%	88.8%
Liberty Elementary			Reside/Attend	779	753	732										
Northwest	825	935	Reside	878	841	839	845	852	877	873	891	90.4%	91.1%	93.8%	93.4%	95.3%
Grades PK-5			Attend	851	829	774	791	805	830	826	844	84.6%	86.1%	88.7%	88.3%	90.2%
Minglewood Elementary			Reside/Attend	679	664	653										
Northwest	990	990	Reside	754	721	720	746	763	807	835	883	75.4%	77.1%	81.5%	84.3%	89.2%
Grades PK-5			Attend	781	754	733	729	783	827	855	903	73.6%	79.1%	83.5%	86.3%	91.2%
Montgomery Central Elementary			Reside/Attend	375	371	403										
Montgomery Central	528	528	Reside	410	408	438	443	445	450	419	419	83.9%	84.3%	85.2%	79.4%	79.4%
Grades PK-5			Attend	504	494	499	491	514	519	488	488	93.0%	97.4%	98.4%	92.5%	92.5%
ELEMENTARY TOTAL																
Grades PK-5	19,482	21,066	Reside	18,074	17,656	18,259	18,654	19,056	19,620	19,928	20,355	88.6%	90.5%	93.1%	94.6%	96.6%
			Attend	18,075	17,656	18,259	18,654	19,056	19,620	19,928	20,355	88.6%	90.5%	93.1%	94.6%	96.6%

Source: RSP & Associates, LLC - December 2021

Note 1: Student Projections are based on the residence of the student (Does not Include Open Enroll out of district)

Note 2: School Choice Options between Facilities are depicted in the Projections (ESL, SPED, Other)

Note 3: PreKindergarten students are included in the enrollment projections

Note 4: Capacity of each facility provided by CMCSS (Reflects with and without portables)

Note 5: Reside are students that within that attendance area

Note 6: Attend are students who attended that school

Note 7: Reside/Attend are students who reside in the attendance area and attend that school

Note 8: Projections are utilizing the 2021/22 BOE approved ES, MS, and HS attendance areas

Note 9: No Assigned Attendance Area are areas that likely will have residential development where no attendance area is assigned

CAPACITY INFORMATION

	> No Portables Capacity
	> No Portables and Portable Capacity

COMPLETE FEEDER

	Clarksville
	Kenwood
	Montgomery Central
	Northeast
	Northwest
	Rossvie
	West Creek

INCOMPLETE FEEDER

	Clarksville & Rossvie
	Kenwood & Rossvie
	Kenwood & West Creek
	Montgomery & Rossvie
	Northeast & Rossvie
	Northwest & West Creek

Elementary Projections

School	Capacity		Student Location	Past School Enrollment			Projected Reside and Attend Enrollment					Projected Reside & Attend Adjusted Capacity%				
	No Portable	Portable		2019/20	2020/21	2021/22	2022/23	2023/24	2024/25	2025/26	2026/27	2022/23	2023/24	2024/25	2025/26	2026/27
Moore Elementary Clarksville & Rossvie Grades K-5	561	583	Reside/Attend Reside Attend	337 389 508	315 379 442	306 364 440	360 458	381 453	393 465	395 467	408 480	61.7% 78.6%	65.4% 77.6%	67.4% 79.7%	67.8% 80.0%	70.0% 82.3%
Norman Smith Elementary Montgomery Central & Rossvie Grades PK-5	627	737	Reside/Attend Reside Attend	486 665 556	445 573 511	490 613 561	628 567	629 574	629 574	633 578	636 581	85.2% 76.9%	85.3% 77.8%	85.3% 77.8%	85.9% 78.4%	86.3% 78.8%
Northeast Elementary Northeast Grades PK-5	792	924	Reside/Attend Reside Attend	720 846 805	676 782 774	697 793 799	825 814	841 842	862 863	870 871	891 892	89.3% 88.1%	91.0% 91.2%	93.3% 93.4%	94.2% 94.3%	96.4% 96.6%
Oakland Elementary Northeast and Rossvie Grades K-5	1,056	1,188	Reside/Attend Reside Attend	886 1,002 962	930 1,067 1,012	1,079 1,217 1,139	1,257 1,194	1,305 1,235	1,370 1,300	1,437 1,367	1,517 1,447	105.8% 100.5%	109.8% 103.9%	115.3% 109.4%	121.0% 115.0%	127.7% 121.8%
Pisgah Elementary Kenwood & West Creek Grades PK-5	842	908	Reside/Attend Reside Attend	737 798 824	779 853 889	915 1,004 980	1,091 1,075	1,210 1,206	1,334 1,330	1,454 1,450	1,539 1,535	120.2% 118.4%	133.3% 132.8%	146.9% 146.5%	160.1% 159.7%	169.5% 169.1%
Ringgold Elementary Kenwood Grades PK-5	858	924	Reside/Attend Reside Attend	744 834 832	680 745 773	674 753 737	813 775	844 843	867 866	884 883	909 908	88.0% 83.9%	91.3% 91.2%	93.8% 93.7%	95.7% 95.5%	98.4% 98.2%
Rossvie Elementary Rossvie Grades K-5	1,056	1,298	Reside/Attend Reside Attend	944 1,023 1,069	992 1,087 1,093	1,043 1,139 1,145	1,158 1,162	1,181 1,187	1,246 1,252	1,279 1,285	1,272 1,278	89.2% 89.5%	91.0% 91.4%	96.0% 96.5%	98.5% 99.0%	98.0% 98.5%
Sango Elementary Clarksville Grades K-5	825	847	Reside/Attend Reside Attend	667 790 754	711 855 790	770 907 841	933 877	973 907	1,040 974	1,077 1,011	1,112 1,046	110.2% 103.5%	114.9% 107.1%	122.8% 115.0%	127.2% 119.4%	131.3% 123.5%
St. Bethlehem Elementary Kenwood & Rossvie Grades PK-2	585	585	Reside/Attend Reside Attend	418 509 510	440 546 495	457 558 492	605 513	618 557	609 548	609 548	602 541	103.4% 87.7%	105.6% 95.2%	104.1% 93.7%	104.1% 93.7%	102.9% 92.5%
West Creek Elementary West Creek Grades PK-5	1,039	1,193	Reside/Attend Reside Attend	793 851 941	788 882 947	831 907 962	950 991	957 1,015	996 1,054	1,027 1,085	1,045 1,103	79.6% 83.1%	80.2% 85.1%	83.5% 88.4%	86.1% 91.0%	87.6% 92.5%
Woodlawn Elementary Northwest Grades K-5	759	781	Reside/Attend Reside Attend	717 786 765	689 754 733	692 783 713	771 730	790 736	793 739	787 733	795 741	98.7% 93.5%	101.2% 94.3%	101.5% 94.7%	100.8% 93.9%	101.8% 94.9%
Virtual/Alternative Elementary Grades K-5	0	0	Reside/Attend Reside Attend	22 25 22	16 21 16	9 15 448	1 390	1 288	1 288	0 287	0 287	0.0% 0.0%	0.0% 0.0%	0.0% 0.0%	0.0% 0.0%	0.0% 0.0%
ELEMENTARY TOTAL Grades PK-5	19,482	21,066	Reside Attend	18,074 18,075	17,656 17,656	18,259 18,259	18,654 18,654	19,056 19,056	19,620 19,620	19,928 19,928	20,355 20,355	88.6% 88.6%	90.5% 90.5%	93.1% 93.1%	94.6% 94.6%	96.6% 96.6%

Source: RSP & Associates, LLC - December 2021

Note 1: Student Projections are based on the residence of the student (Does not include Open Enroll out of district)

Note 2: School Choice Options between Facilities are depicted in the Projections (ESL, SPED, Other)

Note 3: Prekindergarten students are included in the enrollment projections

Note 4: Capacity of each facility provided by CMCS (Reflects with and without portables)

Note 5: Reside are students that within that attendance area

Note 6: Attend are students who attended that school

Note 7: Reside/Attend are students who reside in the attendance area and attend that school

Note 8: Projections are utilizing the 2021/22 BOE approved ES, MS, and HS attendance areas

Note 9: No Assigned Attendance Area are areas that likely will have residential development where no attendance area is assigned

CAPACITY INFORMATION

	> No Portables Capacity
	> No Portables and Portable Capacity

COMPLETE FEEDER

	Clarksville
	Kenwood
	Montgomery Central
	Northeast
	Northwest
	Rossvie
	West Creek

INCOMPLETE FEEDER

	Clarksville & Rossvie
	Kenwood & Rossvie
	Kenwood & West Creek
	Montgomery & Rossvie
	Northeast & Rossvie
	Northwest & West Creek

Middle School Projections

School	Capacity		Student Location	Past School Enrollment			Projected Reside and Attend Enrollment					Projected Reside & Attend Adjusted Capacity%				
	No Portable	Portable		2019/20	2020/21	2021/22	2022/23	2023/24	2024/25	2025/26	2026/27	2022/23	2023/24	2024/25	2025/26	2026/27
Kenwood Middle	1,266	1,266	Reside/Attend	1,073	1,101	1,023										
Kenwood			Reside	1,210	1,210	1,136	1,140	1,123	1,148	1,161	1,184	90.0%	88.7%	90.7%	91.7%	93.5%
Grades 6-8			Attend	1,172	1,185	1,077	1,068	1,075	1,100	1,113	1,136	84.4%	84.9%	86.9%	87.9%	89.8%
Montgomery Central Middle	832	940	Reside/Attend	796	770	762										
Montgomery Central			Reside	839	819	818	820	824	826	864	861	87.2%	87.7%	87.9%	91.9%	91.6%
Grades 6-8			Attend	853	817	801	817	812	814	852	849	86.9%	86.4%	86.6%	90.6%	90.3%
New Providence Middle	1,210	1,237	Reside/Attend	1,079	1,085	1,104										
Northwest			Reside	1,173	1,157	1,195	1,177	1,159	1,174	1,178	1,151	95.1%	93.7%	94.9%	95.2%	93.0%
Grades 6-8			Attend	1,150	1,152	1,135	1,126	1,117	1,132	1,136	1,109	91.0%	90.3%	91.5%	91.9%	89.7%
Northeast Middle	1,285	1,555	Reside/Attend	1,306	1,387	1,317										
Northeast			Reside	1,415	1,477	1,474	1,397	1,393	1,423	1,507	1,541	89.8%	89.6%	91.5%	96.9%	99.1%
Grades 6-8			Attend	1,382	1,460	1,371	1,307	1,319	1,349	1,433	1,467	84.1%	84.8%	86.7%	92.1%	94.3%
Richview Middle	1,191	1,245	Reside/Attend	1,088	1,081	1,058										
Clarksville			Reside	1,142	1,137	1,133	1,151	1,183	1,189	1,244	1,226	92.4%	95.0%	95.5%	99.9%	98.5%
Grades 6-8			Attend	1,200	1,167	1,118	1,131	1,183	1,189	1,244	1,226	90.8%	95.0%	95.5%	99.9%	98.5%
Rossvie Middle	1,266	1,590	Reside/Attend	1,385	1,416	1,426										
Rossvie			Reside	1,492	1,508	1,529	1,523	1,602	1,599	1,680	1,721	95.8%	100.8%	100.6%	105.7%	108.2%
Grades 6-8			Attend	1,486	1,501	1,495	1,491	1,577	1,574	1,655	1,696	93.8%	99.2%	99.0%	104.1%	106.7%
West Creek Middle	1,209	1,506	Reside/Attend	1,262	1,275	1,245										
West Creek			Reside	1,333	1,342	1,343	1,421	1,577	1,733	1,857	2,070	94.4%	104.7%	115.1%	123.3%	137.5%
Grades 6-8			Attend	1,361	1,369	1,316	1,404	1,568	1,724	1,848	2,061	93.2%	104.1%	114.5%	122.7%	136.9%
Virtual/Alternative Middle	0	0	Reside/Attend	13	12	9										
Grades 6-8			Reside	14	13	10	2	2	1	1	1	0.0%	0.0%	0.0%	0.0%	0.0%
			Attend	13	12	325	287	212	211	211	211	0.0%	0.0%	0.0%	0.0%	0.0%
MIDDLE TOTAL	8,259	9,339	Reside	8,618	8,663	8,638	8,631	8,863	9,093	9,492	9,755	92.4%	94.9%	97.4%	101.6%	104.5%
Grades 6-8			Attend	8,617	8,663	8,638	8,631	8,863	9,093	9,492	9,755	92.4%	94.9%	97.4%	101.6%	104.5%

Source: RSP & Associates, LLC - December 2021

Note 1: Student Projections are based on the residence of the student (Does not Include Open Enroll out of district)

Note 2: School Choice Options between Facilities are depicted in the Projections (ESL, SPED, Other)

Note 3: PreKindergarten students are included in the enrollment projections

Note 4: Capacity of each facility provided by CMCSS (Reflects with and without portables)

Note 5: Reside are students that within that attendance area

Note 6: Attend are students who attended that school

Note 7: Reside/Attend are students who reside in the attendance area and attend that school

Note 8: Projections are utilizing the 2021/22 BOE approved ES, MS, and HS attendance areas

Note 9: No Assigned Attendance Area are areas that likely will have residential development where no attendance area is assigned

CAPACITY INFORMATION

	> No Portables Capacity
	> No Portables and Portable Capacity

COMPLETE FEEDER

	Clarksville
	Kenwood
	Montgomery Central
	Northeast
	Northwest
	Rossvie
	West Creek

INCOMPLETE FEEDER

	Clarksville & Rossvie
	Kenwood & West Creek
	Montgomery & Rossvie
	Northeast & Rossvie
	Northwest & West Creek

High School Projections

School	Capacity		Student Location	Past School Enrollment			Projected Reside and Attend Enrollment					Projected Reside & Attend Adjusted Capacity%				
	No Portable	Portable		2019/20	2020/21	2021/22	2022/23	2023/24	2024/25	2025/26	2026/27	2022/23	2023/24	2024/25	2025/26	2026/27
Clarksville High	1,509	1,537	Reside/Attend	1,252	1,368	1,386										
Grades 9-12			Reside	1,352	1,474	1,508	1,542	1,608	1,623	1,602	1,656	100.3%	104.6%	105.6%	104.2%	107.7%
			Attend	1,401	1,519	1,519	1,562	1,630	1,645	1,624	1,678	101.6%	106.1%	107.0%	105.7%	109.2%
Kenwood High	1,686	1,686	Reside/Attend	1,125	1,165	1,157										
Grades 9-12			Reside	1,382	1,406	1,424	1,494	1,539	1,549	1,537	1,521	88.6%	91.3%	91.9%	91.2%	90.2%
			Attend	1,288	1,319	1,260	1,328	1,401	1,411	1,399	1,383	78.8%	83.1%	83.7%	83.0%	82.0%
Montgomery Central High	1,274	1,274	Reside/Attend	910	931	988										
Grades 9-12			Reside	987	1,001	1,074	1,089	1,122	1,141	1,097	1,124	85.5%	88.1%	89.6%	86.1%	88.2%
			Attend	1,004	1,025	1,074	1,094	1,130	1,149	1,105	1,132	85.9%	88.7%	90.2%	86.7%	88.9%
Northeast High	1,705	1,705	Reside/Attend	1,311	1,363	1,457										
Grades 9-12			Reside	1,510	1,571	1,686	1,873	1,904	1,923	1,943	1,932	109.9%	111.7%	112.8%	114.0%	113.3%
			Attend	1,463	1,505	1,574	1,762	1,807	1,826	1,846	1,835	103.3%	106.0%	107.1%	108.3%	107.6%
Northwest High	1,627	1,627	Reside/Attend	1,189	1,181	1,201										
Grades 9-12			Reside	1,352	1,337	1,366	1,467	1,535	1,522	1,574	1,550	90.2%	94.3%	93.5%	96.7%	95.3%
			Attend	1,361	1,368	1,359	1,443	1,541	1,528	1,580	1,556	88.7%	94.7%	93.9%	97.1%	95.6%
Rossville High	1,686	1,910	Reside/Attend	1,697	1,743	1,806										
Grades 9-12			Reside	1,854	1,901	1,998	2,084	2,168	2,246	2,212	2,308	109.1%	113.5%	117.6%	115.8%	120.8%
			Attend	1,864	1,908	1,955	2,040	2,142	2,220	2,186	2,282	106.8%	112.1%	116.2%	114.4%	119.5%
West Creek High	1,686	1,686	Reside/Attend	1,291	1,391	1,441										
Grades 9-12			Reside	1,448	1,554	1,633	1,759	1,794	1,859	2,085	2,318	104.3%	106.4%	110.3%	123.7%	137.5%
			Attend	1,504	1,601	1,635	1,755	1,811	1,876	2,102	2,335	104.1%	107.4%	111.3%	124.7%	138.5%
Virtual/Alternative High	0	0	Reside/Attend	133	136	206										
Grades 9-12			Reside	133	137	207	121	115	114	115	114	0.0%	0.0%	0.0%	0.0%	0.0%
			Attend	133	136	520	445	323	322	323	322	0.0%	0.0%	0.0%	0.0%	0.0%
ELEMENTARY TOTAL	19,482	21,066	Reside	18,074	17,656	18,259	18,654	19,056	19,620	19,928	20,355	88.6%	90.5%	93.1%	94.6%	96.6%
Grades PK-5			Attend	18,075	17,656	18,259	18,654	19,056	19,620	19,928	20,355	88.6%	90.5%	93.1%	94.6%	96.6%
MIDDLE TOTAL	8,259	9,339	Reside	8,618	8,663	8,638	8,631	8,863	9,093	9,492	9,755	92.4%	94.9%	97.4%	101.6%	104.5%
Grades 6-8			Attend	8,617	8,663	8,638	8,631	8,863	9,093	9,492	9,755	92.4%	94.9%	97.4%	101.6%	104.5%
HIGH TOTAL	11,173	11,425	Reside	10,018	10,381	10,896	11,429	11,785	11,977	12,165	12,523	100.0%	103.2%	104.8%	106.5%	109.6%
Grades 9-12			Attend	10,018	10,381	10,896	11,429	11,785	11,977	12,165	12,523	100.0%	103.2%	104.8%	106.5%	109.6%
DISTRICT K-12 TOTALS	38,914	41,830	Reside	36,710	36,700	37,793	38,714	39,704	40,690	41,585	42,633	92.6%	94.9%	97.3%	99.4%	101.9%
Grades PK-12			Attend	36,710	36,700	37,793	38,714	39,704	40,690	41,585	42,633	92.6%	94.9%	97.3%	99.4%	101.9%

Source: RSP & Associates, LLC - December 2021

Note 1: Student Projections are based on the residence of the student (Does not Include Open Enroll out of district)

Note 2: School Choice Options between Facilities are depicted in the Projections (ESL, SPED, Other)

Note 3: PreKindergarten students are included in the enrollment projections

Note 4: Capacity of each facility provided by CMCSS (Reflects with and without portables)

Note 5: Reside are students that within that attendance area

Note 6: Attend are students who attended that school

Note 7: Reside/Attend are students who reside in the attendance area and attend that school

Note 8: Projections are utilizing the 2021/22 BOE approved ES, MS, and HS attendance areas

Note 9: No Assigned Attendance Area are areas that likely will have residential development where no attendance area is assigned

CAPACITY INFORMATION

	> No Portables Capacity
	> No Portables and Portable Capacity

COMPLETE FEEDER

	Clarksville
	Kenwood
	Montgomery Central
	Northeast
	Northwest
	Rossville
	West Creek

INCOMPLETE FEEDER

	Clarksville & Rossville
	Kenwood & West Creek
	Montgomery & Rossville
	Northeast & Rossville
	Northwest & West Creek

Projection Take Away(s)

- Enrollment will continue to increase at each level (ES, MS, HS)
- Capacity limited to no portables is not adequate for current and future enrollment
 - If there is a goal to eliminate portables a plan will need to be created to increase capacity either by a combination of new facilities, additions, or programming changes in classrooms
 - Student educational programming need should be examined to determine if the appropriate space is available for the specific educational need of students
- The district has a plan for addressing capacity issues with the opening of new schools:
 - Kirkwood MS in 2022/23
 - Kirkwood HS in 2023/24
 - Future ES in 2024/25
- The redistricting process in the Spring of 2022 will create attendance areas for the secondary

Part 2

Zoning Process Information

Meeting Objectives

❑ Receive Process information

Timeline of process

Boundary Criteria

Summary of Past Meetings

❑ Receive Enrollment Projections

RSP Sophisticated Forecast Model

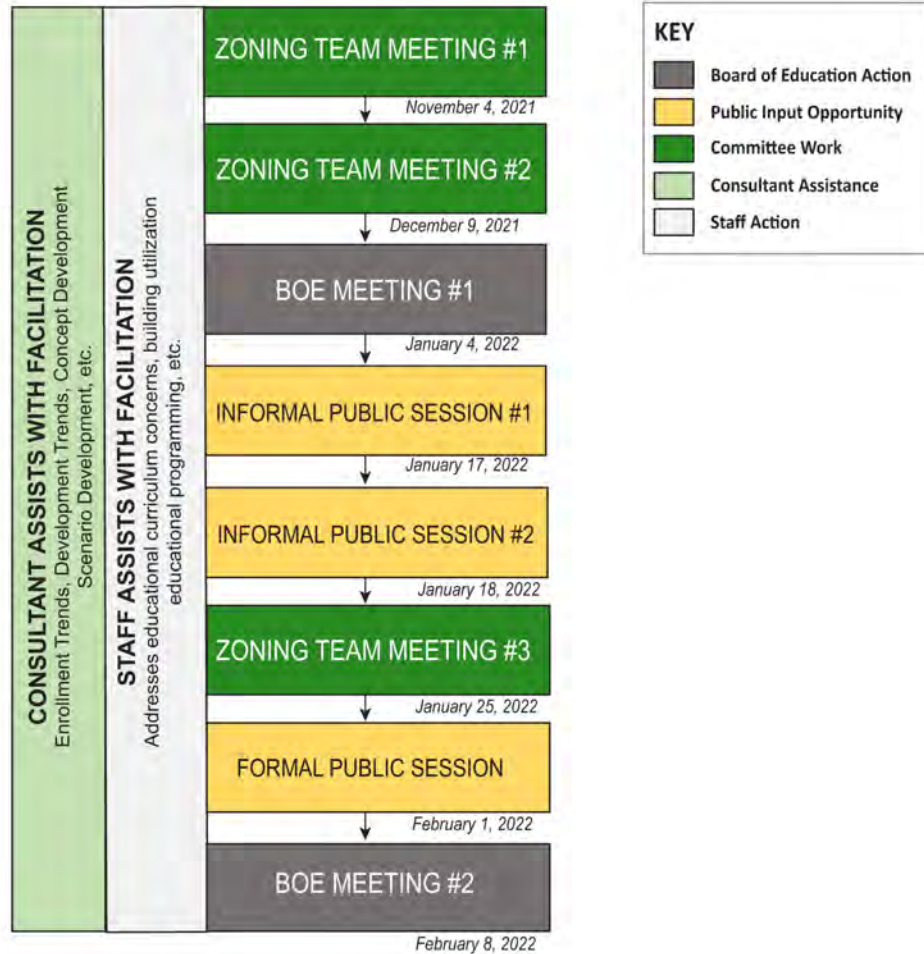
5-year projections by grade, building, and district

❑ Receive Rezoning Option

Concept 1 – Secondary Boundaries

❑ Provide feedback to Boundary Committee

CLARKSVILLE-MONTGOMERY COUNTY SCHOOL SYSTEM COMPREHENSIVE BOUNDARY PROCESS



DRAFT

RSP Updated December 2, 2021

Defined Process Roles

Zoning Team

Examine scenarios presented and evaluate based on the community values and prioritized goals so a recommendation can be provided to the Board of Education. Focus is on the community values and prioritized goals.

Board of Education

Provide guidance over the process, attend the meetings and public forums, be a resource in answering questions related to school district related topics, communicate the educational vision, and provide ongoing progress updates to the school community through a targeted communication plan.

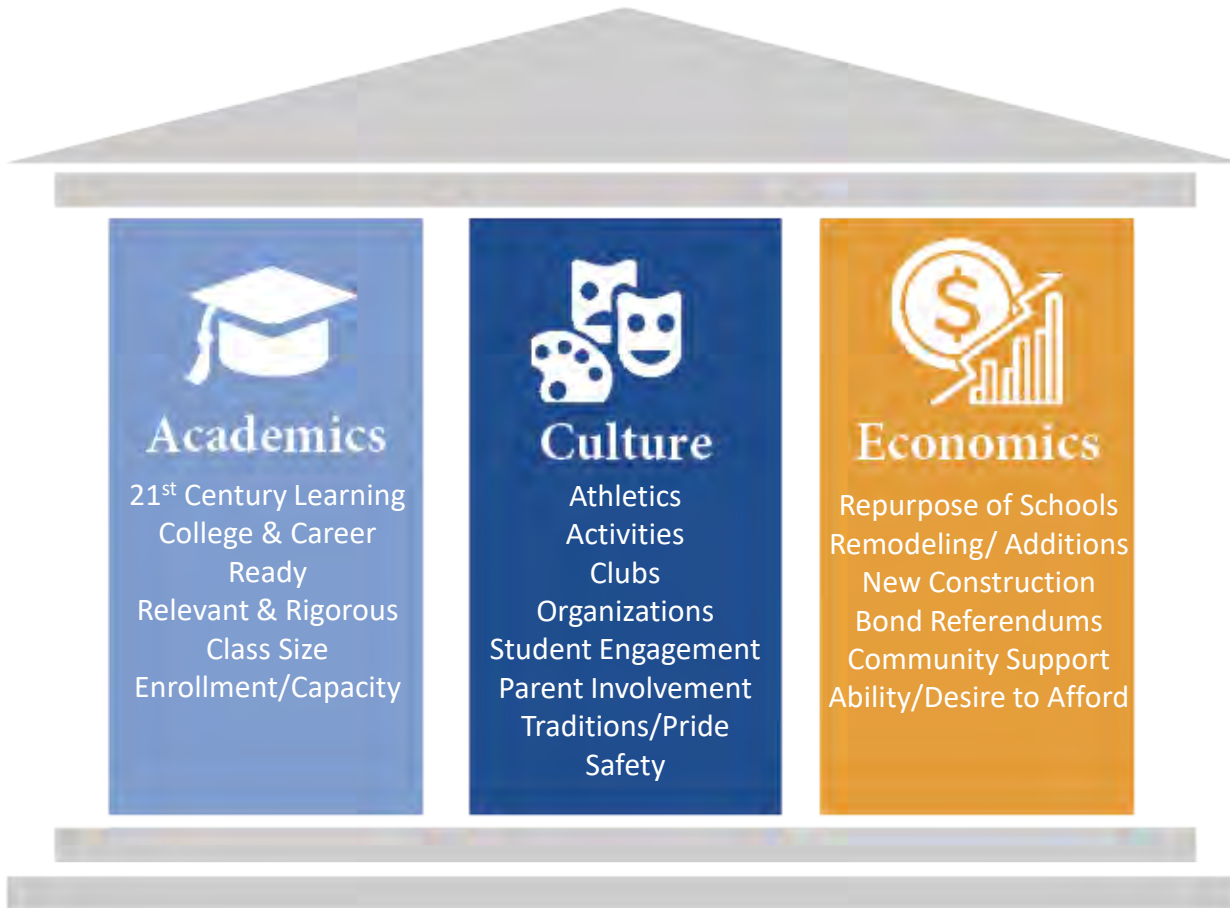
RSP

Facilitator (Board, Committee, and Public Forums). Utilize GIS data, knowledge gained from city jurisdictions and others to create accurate enrollment projections and generate scenarios based on the feed back to the Board, community values, and prioritized goals.

Community

Review the scenarios and provide constructive feedback so the Committee and/or Board can consider how any of these ideas might benefit the facility plan that will be implemented.

Academics, Culture, and Economics (ACE)



- Relationship between all three pillars and the impact they have on each other
- It is a framework that starts the larger facility planning discussion
- Not focused on a physical building or space
- Provides balance and prevents tunnel vision
- Keeps everyone focused on what is important: **Students, Staff, Families, and Community**

Boundary Criteria

Criteria 1.) Resource Distribution



Guiding measure: Ensure equitable distribution of resources according to the learning needs of all students

Criteria 2.) Student Proximity



Guiding measure: Factor the proximity of students to existing schools

Criteria 3.) Student Impact



Guiding measure: Rezone as few students as possible while completing a comprehensive solution

Criteria 4.) Building Capacity



Guiding measure: Enrollment capacity of existing schools

Criteria 5.) Socioeconomics



Guiding measure: Consideration of free and reduced lunch status in each school

Criteria 6.) Future Growth



Guiding measure: Allow for future growth of student population where possible

Criteria 7.) Transportation



Guiding measure: Transport students the least distance possible

Elementary Capacity

Elementary	Building Capacity	Portable Capacity	Total Capacity	21/22 Official Enrollment	Building Capacity	Total Capacity
Barkers Mill	1,040	110	1,150	983	95%	85%
Barksdale	627	110	737	647	103%	88%
Burt *	431	-	431	330	77%	77%
BDES	759	-	759	542	71%	71%
Carmel	842	-	842	627	74%	74%
CHES	825	-	825	579	70%	70%
EMES	842	-	842	659	78%	78%
Glenellen	1,089	88	1,177	1,024	94%	87%
Hazelwood	842	198	1,040	909	108%	87%
Kenwood	842	-	842	692	82%	82%
Liberty	825	110	935	774	94%	83%
Minglewood	990	-	990	733	74%	74%
MCES	528	-	528	504	95%	95%
Moore	561	22	583	440	78%	75%
N Smith	627	110	737	561	89%	76%
Northeast	792	132	924	798	101%	86%
Oakland	1,056	132	1,188	1,142	108%	96%
Pisgah	842	66	908	979	116%	108%
Ringgold	858	66	924	737	86%	80%
Rossvie	1,056	242	1,298	1,145	108%	88%
St. Bethlehem *	585	-	585	492	84%	84%
Sango	825	22	847	841	102%	99%
WCES	1,039	154	1,193	962	93%	81%
Woodlawn	759	22	781	709	93%	91%
Total	19,482	1,584	21,066	17,809	91%	85%

Elementary Schools facing utilization challenges:

- Barksdale ES
- Hazelwood ES
- Northeast ES
- Oakland ES
- Pisgah ES
- Rossvie ES
- Sango ES

Source: CMCS Student Data

Secondary Capacity

Middle Schools	Building Capacity	Portable Capacity	Total Capacity	21/22 Official	Building Capacity	Total Capacity
Kenwood	1,266	0	1,266	1,075	85%	85%
Montgomery Central	832	108	940	803	97%	85%
New Providence	1,210	27	1,237	1,133	94%	92%
Northeast	1,285	270	1,555	1,371	107%	88%
Richview	1,191	54	1,245	1,118	94%	90%
Rossvie	1,266	324	1,590	1,496	118%	94%
West Creek	1,209	297	1,506	1,315	109%	87%
Total	8,259	1,080	9,339	8,311	101%	89%

Source: CMCSS Student Data

Middle Schools facing utilization challenges:

- Northeast MS
- Rossvie MS
- West Creek MS

High Schools	Building Capacity	Portable Capacity	Total Capacity	21/22 Official Enrollment	Building Capacity	Total Capacity
Clarksville	1,509	28	1,537	1,526	101.0%	99.0%
Kenwood	1,686	0	1,686	1,258	75.0%	75.0%
Montgomery Central	1,274	0	1,274	1,076	84.0%	84.0%
Northeast	1,705	0	1,705	1,574	92.0%	92.0%
Northwest	1,627	0	1,627	1,359	84.0%	84.0%
Rossvie	1,686	224	1,910	1,958	116.0%	103.0%
West Creek	1,686	0	1,686	1,636	97.0%	97.0%
Total	11,173	252	11,425	10,387	93.0%	91.0%

Source: CMCSS Student Data

High School facing utilization challenges:

- Clarksville HS
- Rossvie HS

Kirkwood Middle School

Kirkwood Middle School Building Facts:

- Three-school campus east of Interstate 24 at Exit 8 on Rossview Road that's designed to help alleviate overcrowding issues in the district
- 64-classrooms
- 1,209 student capacity
- Projected opening August 2022



Kirkwood High School is also planned to open August 2023 at this location. This school will mirror West Creek High School and serve 1,686 students.

Meeting 1 Recap

The Zoning Team met on November 4, 2021 to begin the Boundary Analysis.

The following is an overview of the meeting:

- Initial Team Meeting
- Overview of roles
- Discussion of process reasoning
- Discussion of capacity
- Discussion of new Kirkwood Site
- Boundary Criteria and Guiding Principles
- Focus of attendance area changes are the secondary schools
- Discussion of potential solutions to develop concepts

Boundary Criteria – *prioritized*

1

Equitable distribution of resources throughout the district



2

Socioeconomics and demographics of students



3

Future growth in the district



4

Transportation of students



5

Student proximity to schools



6

Optimal building capacity
Low impact on students

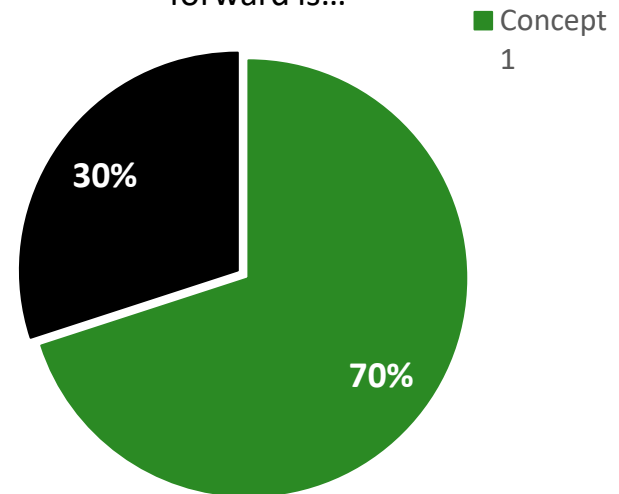


Meeting 2 Recap

The Zoning Team met on December 9, 2021 for the 2nd meeting in this process with a follow-up on January 3, 2022 and the following were general comments:

- Prioritization of Boundary Criteria
- Discussion of district-wide growth
- Received Enrollment Analysis
- Concept 1 – map and tables
 - General Themes of Committee feedback:
 - *Increase Kirkwood attendance*
 - *Relieve more students from Northeast*
 - *Combine elements from concept 2*
- Concept 2 – map and tables
 - General Themes of Committee feedback:
 - *Keep Fort Campbell area attending West Creek*
 - *Increase Kirkwood attendance*
 - *Relieve more students from Northeast*
 - *Combine elements from concept 1*

After initial review, the concept that I would most like to see moving forward is...



Note: Poll results were drawn from the committee and the CMCSS Administration Team.

From this input one concept was created to best address committee and administration input.

Part 3

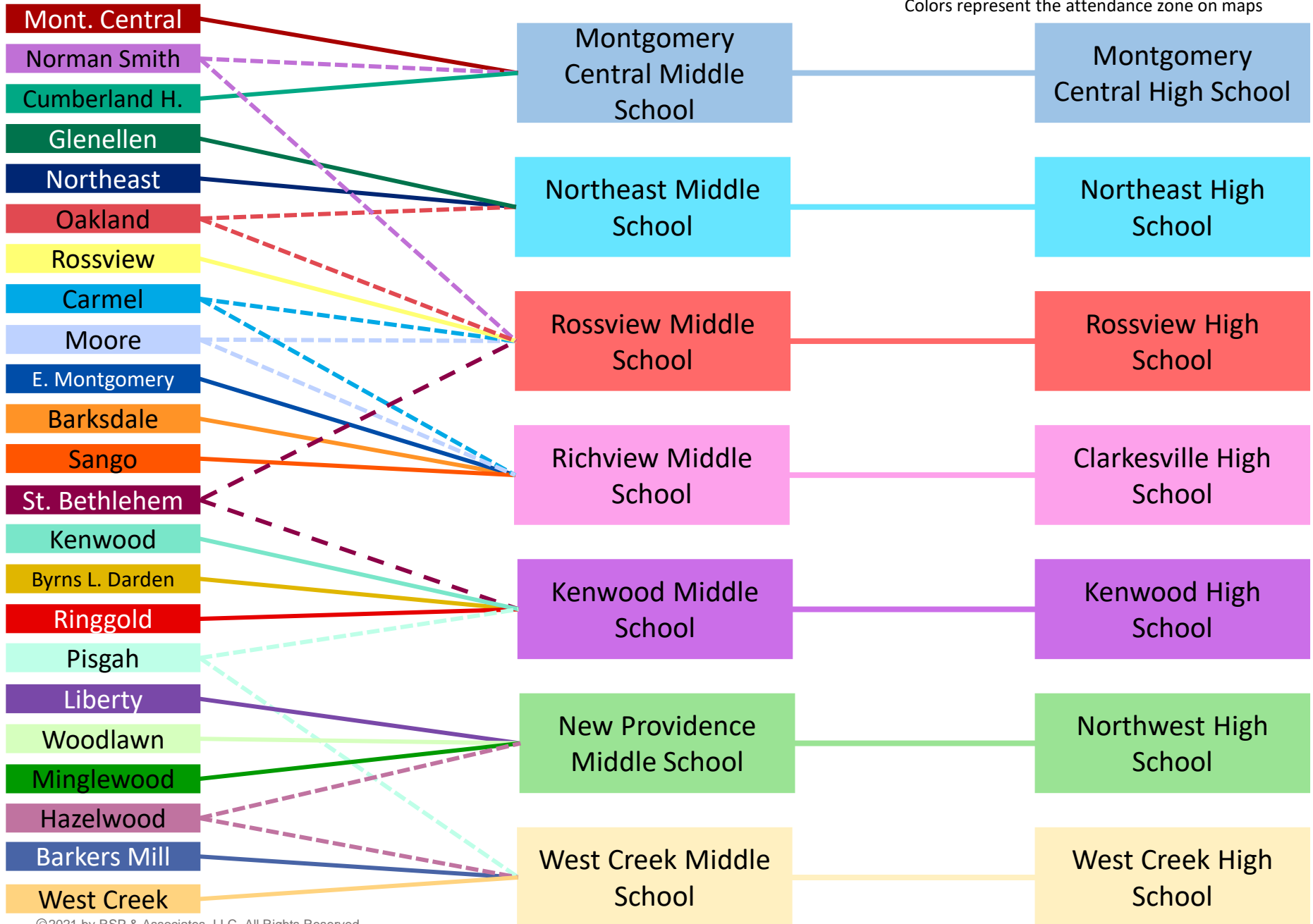
Recommended Boundary Concept

**Current
Boundaries**

**Concept 1
Boundaries**

Current Feeder System

- - - - - Dotted Line: Broken feeder
 _____ Line: Complete feeder
 Colors represent the attendance zone on maps



Concept #1

Updated 12/27/21

Starting Point

- Establish a boundary for Kirkwood Middle and High School that brought the building utilization above 90%.
- Focus on creating attendance areas that best meet boundary criteria

Overview of Change – Please note these are general bullet points to begin a discussion. They do not encompass all changes in each concept – refer to the map.

- **Kirkwood**

- Includes everything east of I-24 and north of Hwy 76 originally in Northeast boundary

- **Kenwood**

- Includes neighborhood off Peachers Mill near Little West Fork

- **Northeast**

- Includes everything east of N. Red River originally in West Creek boundary
 - East boundary ends at I-24

- **Rossvie**

- Extends boundary south of I-24 until Hwy 41AS to include areas in Sango and east of Sango Drive

- **Clarksville/Richview**

- Extends boundary west along the railroad until Riverside drive
 - Includes area bound by railroad, Cumberland River, Hickory Grove and Greenwood Ave

- **Montgomery Central**

- Boundary relatively unchanged

- **Northwest/New Providence**

- Boundary relatively unchanged

- **West Creek**

- Includes everything west of N. Red River
 - Area originally east of river now included in Northeast boundary

Concept 1: Map



Updated 12/10/2021

Clarksville-Montgomery County School System Concept 1: Secondary Boundaries

DRAFT



Elementary Schools

- 1 Barkers Mill
- 2 Barksdale
- 3 Burt *
- 4 Byrns L. Darden
- 5 Carmel
- 6 Cumberland Heights
- 7 East Montgomery
- 8 Glenellen
- 9 Hazelwood
- 10 Kenwood
- 11 Liberty
- 12 Minglewood
- 13 Montgomery Central
- 14 Moore
- 15 Norman Smith
- 16 Northeast
- 17 Oakland
- 18 Pisgah
- 19 Ringgold
- 20 Rossville
- 21 St. Bethlehem *
- 22 Sango
- 23 West Creek
- 24 Woodlawn

Middle Schools

- 25 Kenwood
- 26 Montgomery Central
- 27 New Providence
- 28 Northeast
- 29 Richview
- 30 Rossville
- 31 West Creek

High Schools

- 32 Clarksville
- 33 Kenwood
- 34 Montgomery Central
- 35 Northeast
- 36 Northwest
- 37 Rossville
- 38 West Creek

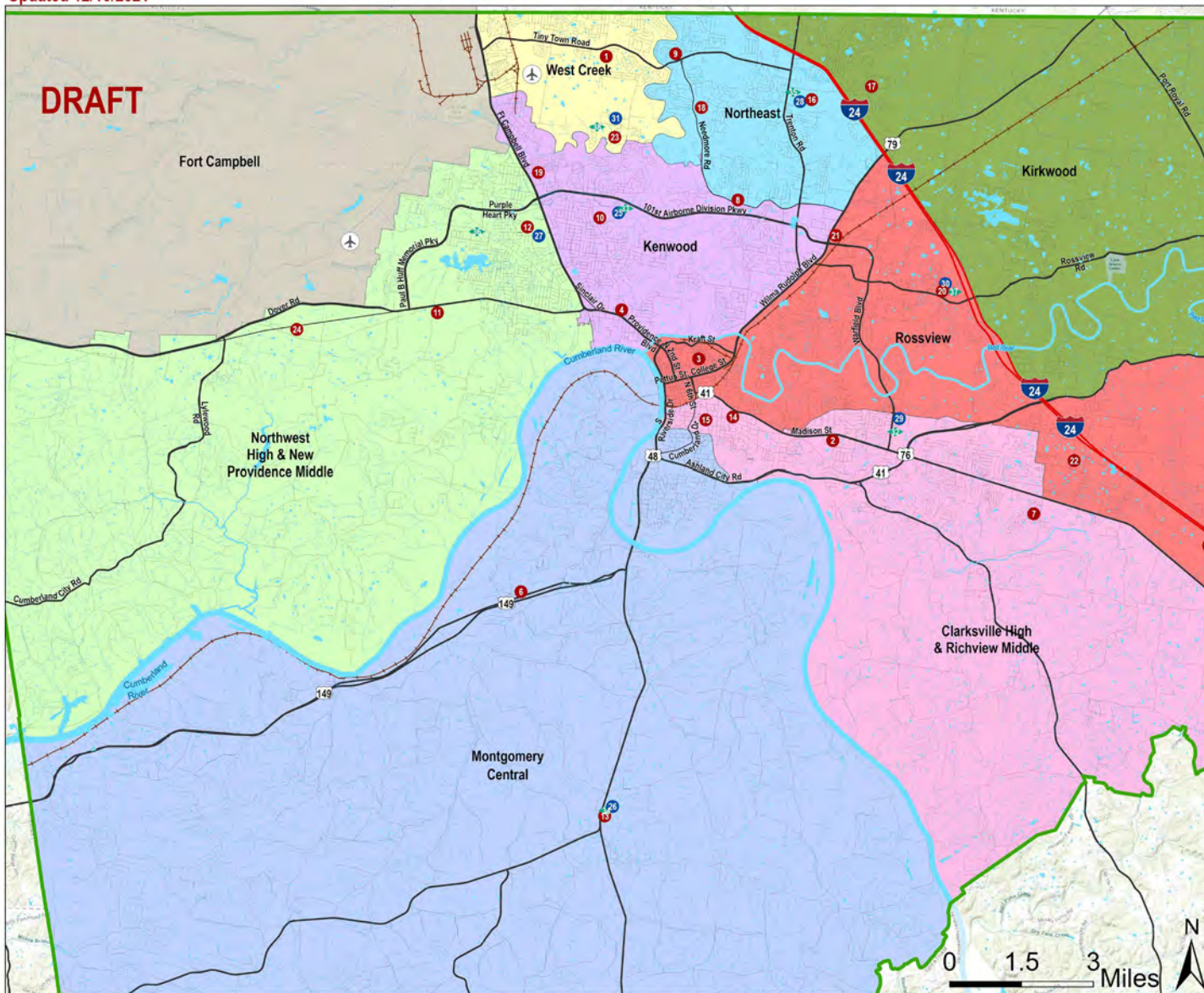
Type of School

- Elementary
- Middle
- High
- District Boundary
- ✈ Airports
- Fort Campbell
- Kirkwood Campus

Concept 1: Secondary Boundaries

- Clarksville High & Richview Middle
- Kenwood
- Kirkwood
- Montgomery Central
- Northeast
- Northwest High & New Providence Middle
- Rossville
- West Creek

Map data provided by
Montgomery County, City of
Clarksville, CMCSS, US
Census Bureau, and ESRI.
Map created December 2021.



Concept 1: Current and Conceptual Boundaries



Clarksville-Montgomery County School System Concept 1: Secondary Boundaries

DRAFT



Updated 1/3/2022

Elementary Schools

- 1 Barkers Mill
- 2 Barksdale
- 3 Burt *
- 4 Byrns L. Darden
- 5 Carmel
- 6 Cumberland Heights
- 7 East Montgomery
- 8 Glenellen
- 9 Hazelwood
- 10 Kenwood
- 11 Liberty
- 12 Minglewood
- 13 Montgomery Central
- 14 Moore
- 15 Norman Smith
- 16 Northeast
- 17 Oakland
- 18 Pisgah
- 19 Ringgold
- 20 Rossvie
- 21 St. Bethlehem *
- 22 Sango
- 23 West Creek
- 24 Woodlawn

Middle Schools

- 25 Kenwood
- 26 Montgomery Central
- 27 New Providence
- 28 Northeast
- 29 Richview
- 30 Rossvie
- 31 West Creek

High Schools

- 32 Clarksville
- 33 Kenwood
- 34 Montgomery Central
- 35 Northeast
- 36 Northwest
- 37 Rossvie
- 38 West Creek

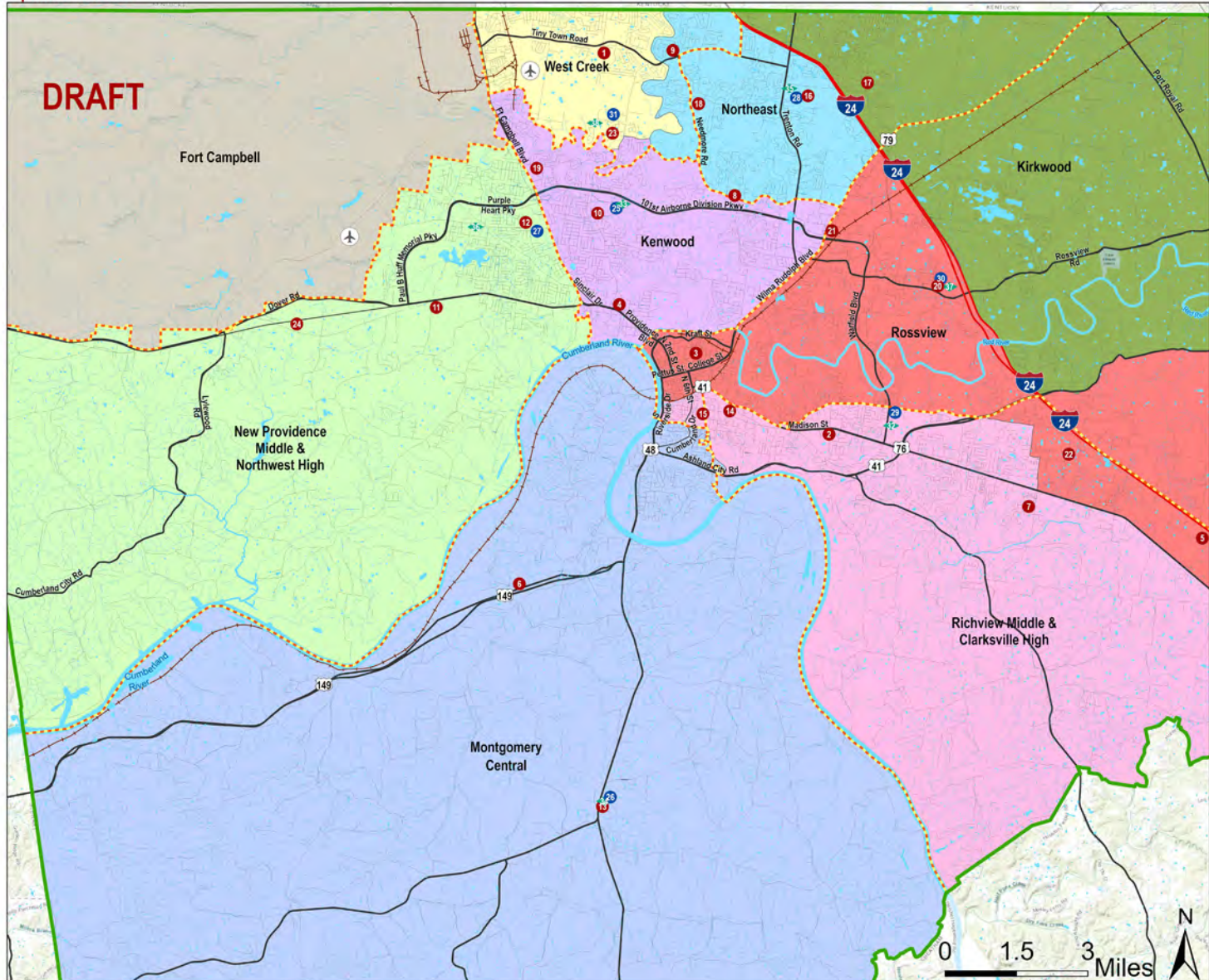
Type of School

- Elementary
- Middle
- High
- District Boundary
- ✈ Airports
- ▭ Current Secondary Boundaries

Concept 1 Attendance Areas

- Kenwood
- Kirkwood
- Montgomery Central
- New Providence Middle & Northwest High
- Northeast
- Richview Middle & Clarksville High
- Rossvie
- West Creek

Map data provided by
Montgomery County, City of
Clarksville, CMCSS, US
Census Bureau, and ESRI.
Map created January 2022.



Concept 1: Middle School Boundary Projections



Updated 01/05/22

School	Capacity		CURRENT														
	No Portable	Portable	Reside Projections					No Portable	Portable	No Portable	Portable	No Portable	Portable	No Portable	Portable	No Portable	Portable
			2022/23	2023/24	2024/25	2025/26	2026/27	2022/23		2023/24		2024/25		2025/26		2026/27	
Kenwood	1,266	1,266	1,140	1,123	1,148	1,161	1,184	90.0%	90.0%	88.7%	88.7%	90.7%	90.7%	91.7%	91.7%	93.5%	93.5%
Kirkwood	1,209	1,209															
Montgomery Central	832	940	820	824	826	864	861	98.6%	87.2%	99.0%	87.7%	99.3%	87.9%	103.8%	91.9%	103.5%	91.6%
New Providence	1,210	1,237	1,177	1,159	1,174	1,178	1,151	97.3%	95.1%	95.8%	93.7%	97.0%	94.9%	97.4%	95.2%	95.1%	93.0%
Northeast	1,285	1,555	1,397	1,393	1,423	1,507	1,541	108.7%	89.8%	108.4%	89.6%	110.7%	91.5%	117.3%	96.9%	119.9%	99.1%
Richview	1,191	1,245	1,151	1,183	1,189	1,244	1,226	96.6%	92.4%	99.3%	95.0%	99.8%	95.5%	104.5%	99.9%	102.9%	98.5%
Rossvie	1,266	1,590	1,523	1,602	1,599	1,680	1,721	120.3%	95.8%	126.5%	100.8%	126.3%	100.6%	132.7%	105.7%	135.9%	108.2%
West Creek	1,209	1,315	1,421	1,577	1,733	1,857	2,070	117.5%	108.1%	130.4%	119.9%	143.3%	131.8%	153.6%	141.2%	171.2%	157.4%
Overall	9,468	10,357	8,629	8,861	9,092	9,491	9,754	91.1%	83.3%	93.6%	85.6%	96.0%	87.8%	100.2%	91.6%	103.0%	94.2%

Source: CMCSS & RSP & Associates, LLC

Updated: 12/30/2021

School	Capacity		CONCEPT 1														
	No Portable	Portable	Reside Projections					No Portable	Portable	No Portable	Portable	No Portable	Portable	No Portable	Portable	No Portable	Portable
			2022/23	2023/24	2024/25	2025/26	2026/27	2022/23		2023/24		2024/25		2025/26		2026/27	
Kenwood	1,266	1,266	1,219	1,221	1,256	1,281	1,301	96.3%	96.3%	96.4%	96.4%	99.2%	99.2%	101.2%	101.2%	102.8%	102.8%
Kirkwood	1,209	1,209	1,063	1,118	1,120	1,195	1,225	87.9%	87.9%	92.5%	92.5%	92.6%	92.6%	98.8%	98.8%	101.3%	101.3%
Montgomery Central	832	940	823	829	830	867	862	98.9%	87.6%	99.6%	88.2%	99.8%	88.3%	104.2%	92.2%	103.6%	91.7%
New Providence	1,210	1,237	1,177	1,159	1,174	1,178	1,151	97.3%	95.1%	95.8%	93.7%	97.0%	94.9%	97.4%	95.2%	95.1%	93.0%
Northeast	1,285	1,555	1,188	1,250	1,371	1,525	1,738	92.5%	76.4%	97.3%	80.4%	106.7%	88.2%	118.7%	98.1%	135.3%	111.8%
Richview	1,191	1,245	995	1,018	1,030	1,059	1,011	83.5%	79.9%	85.5%	81.8%	86.5%	82.7%	88.9%	85.1%	84.9%	81.2%
Rossvie	1,266	1,590	1,132	1,165	1,157	1,224	1,281	89.4%	71.2%	92.0%	73.3%	91.4%	72.8%	96.7%	77.0%	101.2%	80.6%
West Creek	1,209	1,315	1,032	1,098	1,156	1,160	1,183	85.4%	78.5%	90.8%	83.5%	95.6%	87.9%	95.9%	88.2%	97.8%	90.0%
Overall	9,468	10,357	8,629	8,858	9,094	9,489	9,752	91.1%	83.3%	93.6%	85.5%	96.0%	87.8%	100.2%	91.6%	103.0%	94.2%

Source: CMCSS & RSP & Associates, LLC

Updated: 12/30/2021

Notes:

- 1. Areas shaded in orange means the school is over Portable Capacity
- 2. Areas shaded in green means the school is over No Portable Capacity
- 3. Areas not shaded means the school is within functional capacity

Note: Projections for each planning area are rounded at the building level which may result in different totals between the current attendance area projections and concept projections.

Concept 1: High School Boundary Projections



Updated 01/05/22

School	Capacity		CURRENT														
	No Portable	Portable	Reside Projections					No Portable	Portable	No Portable	Portable	No Portable	Portable	No Portable	Portable	No Portable	Portable
			2022/23	2023/24	2024/25	2025/26	2026/27	2022/23		2023/24		2024/25		2025/26		2026/27	
Clarksville High	1,509	1,537	1,542	1,608	1,623	1,602	1,656	102.2%	100.3%	106.6%	104.6%	107.6%	105.6%	106.2%	104.2%	109.7%	107.7%
Kenwood High	1,686	1,686	1,494	1,539	1,549	1,537	1,521	88.6%	88.6%	91.3%	91.3%	91.9%	91.9%	91.2%	91.2%	90.2%	90.2%
Kirkwood High	1,686	1,686	0	0	0	0	0										
Montgomery Central	1,274	1,274	1,089	1,122	1,141	1,097	1,124	85.5%	85.5%	88.1%	88.1%	89.6%	89.6%	86.1%	86.1%	88.2%	88.2%
Northeast High	1,705	1,705	1,873	1,904	1,923	1,943	1,932	109.9%	109.9%	111.7%	111.7%	112.8%	112.8%	114.0%	114.0%	113.3%	113.3%
Northwest High	1,627	1,627	1,467	1,535	1,522	1,574	1,550	90.2%	90.2%	94.3%	94.3%	93.5%	93.5%	96.7%	96.7%	95.3%	95.3%
Rossvie	1,686	1,910	2,084	2,168	2,246	2,212	2,308	123.6%	109.1%	128.6%	113.5%	133.2%	117.6%	131.2%	115.8%	136.9%	120.8%
West Creek	1,686	1,686	1,759	1,794	1,859	2,085	2,318	104.3%	104.3%	106.4%	106.4%	110.3%	110.3%	123.7%	123.7%	137.5%	137.5%
Overall	12,859	13,111	11,308	11,670	11,863	12,050	12,409	87.9%	86.2%	90.8%	89.0%	92.3%	90.5%	93.7%	91.9%	96.5%	94.6%

Source: CMCSS & RSP & Associates, LLC

Updated: 12/30/2021

School	Capacity		CONCEPT 1														
	No Portable	Portable	Reside Projections					No Portable	Portable	No Portable	Portable	No Portable	Portable	No Portable	Portable	No Portable	Portable
			2022/23	2023/24	2024/25	2025/26	2026/27	2022/23		2023/24		2024/25		2025/26		2026/27	
Clarksville High	1,509	1,537	1,376	1,413	1,424	1,394	1,425	91.2%	89.5%	93.6%	91.9%	94.4%	92.6%	92.4%	90.7%	94.4%	92.7%
Kenwood High	1,686	1,686	1,608	1,645	1,653	1,640	1,641	95.4%	95.4%	97.6%	97.6%	98.0%	98.0%	97.3%	97.3%	97.3%	97.3%
Kirkwood High	1,686	1,686	1,459	1,517	1,601	1,606	1,643	86.5%	86.5%	90.0%	90.0%	95.0%	95.0%	95.3%	95.3%	97.4%	97.4%
Montgomery Central	1,274	1,274	1,091	1,123	1,143	1,100	1,130	85.6%	85.6%	88.1%	88.1%	89.7%	89.7%	86.3%	86.3%	88.7%	88.7%
Northeast High	1,705	1,705	1,486	1,532	1,607	1,781	1,890	87.2%	87.2%	89.9%	89.9%	94.3%	94.3%	104.5%	104.5%	110.9%	110.9%
Northwest High	1,627	1,627	1,467	1,535	1,522	1,574	1,550	90.2%	90.2%	94.3%	94.3%	93.5%	93.5%	96.7%	96.7%	95.3%	95.3%
Rossvie	1,686	1,910	1,509	1,576	1,605	1,568	1,637	89.5%	79.0%	93.5%	82.5%	95.2%	84.0%	93.0%	82.1%	97.1%	85.7%
West Creek	1,686	1,686	1,309	1,326	1,307	1,386	1,496	77.6%	77.6%	78.6%	78.6%	77.5%	77.5%	82.2%	82.2%	88.7%	88.7%
Overall	12,859	13,111	11,305	11,667	11,862	12,049	12,412	87.9%	86.2%	90.7%	89.0%	92.2%	90.5%	93.7%	91.9%	96.5%	94.7%

Source: CMCSS & RSP & Associates, LLC

Updated: 12/30/2021

- Notes:
- 1. Areas shaded in orange means the school is over Portable Capacity
 - 2. Areas shaded in green means the school is over No Portable Capacity
 - 3. Areas not shaded means the school is within functional capacity

Note: Projections for each planning area are rounded at the building level which may result in different totals between the current attendance area projections and concept projections.

37

Concept #1: Special Programming

Updated 12/20/21

Concept 1: Middle School

Special Programming Analysis Table			ELL Students				SPED Students			
School	Total Students		Current		Concept 1		Current		Concept 1	
	Current	Concept 1	Total	Percent	Total	Percent	Total	Percent	Total	Percent
Kenwood	1,136	1,151	124	10.9%	126	10.9%	187	16.5%	195	16.9%
Kirkwood	0	1,102			97	8.8%			124	11.3%
Montgomery Central	818	819	18	2.2%	18	2.2%	138	16.9%	138	16.8%
New Providence	1,195	1,195	86	7.2%	86	7.2%	201	16.8%	201	16.8%
Northeast	1,474	1,241	138	9.4%	119	9.6%	217	14.7%	169	13.6%
Richview	1,133	989	45	4.0%	40	4.0%	174	15.4%	153	15.5%
Rossvie	1,529	1,129	133	8.7%	87	7.7%	195	12.8%	167	14.8%
West Creek	1,343	1,002	144	10.7%	115	11.5%	173	12.9%	138	13.8%
Overall	8,628	8,628	688	8.0%	688	62.0%	1,285	14.9%	1,285	14.9%

Source: CMCSS and RSP & Associates, LLC.

Updated: 12/20/21

The location of special programming spaces and how that may relate to student need is essential in making sure the appropriate educational programming is available for each student need.

Kirkwood MS and HS will not show any shading of being greater than 5% change because it is a new school.

Concept 1: High School

Special Programming Analysis Table			ELL Students				SPED Students			
School	Total Students		Current		Concept 1		Current		Concept 1	
	Current	Concept 1	Total	Percent	Total	Percent	Total	Percent	Total	Percent
Clarksville	1,508	1,341	116	7.69%	111	8.3%	157	10.41%	149	11.1%
Kenwood	1,424	1,452	149	10.46%	160	11.0%	219	15.38%	230	15.8%
Kirkwood	0	1,297	0		116	8.9%	0		112	8.6%
Montgomery Central	1,074	1,076	24	2.23%	24	2.2%	139	12.94%	139	12.9%
Northeast	1,686	1,431	174	10.32%	144	10.1%	222	13.17%	186	13.0%
Northwest	1,366	1,366	106	7.76%	106	7.8%	187	13.69%	187	13.7%
Rossvie	1,998	1,485	164	8.21%	108	7.3%	196	9.81%	157	10.6%
West Creek	1,633	1,241	188	11.51%	152	12.2%	163	9.98%	123	9.9%
Overall	10,689	10,689	921	8.62%	921	8.6%	1,283	12.00%	1,283	12.0%

Source: CMCSS and RSP & Associates, LLC.

Updated: 12/20/21

Notes:

1. Student Enrollment provided by CMCSS
2. English-Language Learner (ELL)
3. Special Education (SPED)
4. Areas highlighted in green have an decrease of 5% or more from the current boundaries
5. Areas highlighted in orange have a increase of 5% or more from the current boundaries or are repurposed in this concept

Concept 1: Middle School

Concept #1: Ethnicity



Updated 01/05/22

Concept 1: Middle School

Demographic Analysis Table			CURRENT													
School	Total Students		Asian	Black or African American	Hispanic or Latino	Native American	Pacific Islander	Multi-Racial	White	Asian	Black or African American	Hispanic or Latino	Native American	Pacific Islander	Multi-Racial	White
	Current	Concept 1														
Kenwood	1,136	1,213	10	436	188	3	3	140	356	0.9%	38.4%	16.5%	0.3%	0.3%	12.3%	31.3%
Kirkwood	0	1,102														
Montgomery Central	818	819	2	96	55	0	4	45	616	0.2%	11.7%	6.7%	0.0%	0.5%	5.5%	75.3%
New Providence	1,195	1,195	5	334	195	3	5	123	530	0.4%	27.9%	16.3%	0.3%	0.4%	10.3%	44.4%
Northeast	1,474	1,179	22	469	245	5	20	157	556	1.5%	31.8%	16.6%	0.3%	1.4%	10.7%	37.7%
Richview	1,133	989	14	150	124	0	2	97	746	1.2%	13.2%	10.9%	0.0%	0.2%	8.6%	65.8%
Rossvie	1,529	1,129	56	291	216	4	4	126	832	3.7%	19.0%	14.1%	0.3%	0.3%	8.2%	54.4%
West Creek	1,343	1,002	28	431	273	3	11	149	448	2.1%	32.1%	20.3%	0.2%	0.8%	11.1%	33.4%
Overall	8,628	8,628	137	2,207	1,296	18	49	837	4,084	1.6%	25.6%	15.0%	0.2%	0.6%	9.7%	47.3%

Source: CMCSS and RSP & Associates, LLC.

Updated: 01/05/22

Concept 1: Middle School

Demographic Analysis Table			Concept 1													
School	Total Students		Asian	Black or African American	Hispanic or Latino	Native American	Pacific Islander	Multi-Racial	White	Asian	Black or African American	Hispanic or Latino	Native American	Pacific Islander	Multi-Racial	White
	Current	Concept 1														
Kenwood	1,136	1,213	11	461	201	3	4	145	388	0.9%	38.0%	16.6%	0.2%	0.3%	12.0%	32.0%
Kirkwood	0	1,102	33	217	185	4	10	99	554	3.0%	19.7%	16.8%	0.4%	0.9%	9.0%	50.3%
Montgomery Central	818	819	2	96	55	0	4	45	617	0.2%	11.7%	6.7%	0.0%	0.5%	5.5%	75.3%
New Providence	1,195	1,195	5	334	195	3	5	123	530	0.4%	27.9%	16.3%	0.3%	0.4%	10.3%	44.4%
Northeast	1,474	1,179	15	403	194	3	14	122	428	1.3%	34.2%	16.5%	0.3%	1.2%	10.3%	36.3%
Richview	1,133	989	11	154	114	0	3	90	617	1.1%	15.6%	11.5%	0.0%	0.3%	9.1%	62.4%
Rossvie	1,529	1,129	36	216	131	3	1	99	643	3.2%	19.1%	11.6%	0.3%	0.1%	8.8%	57.0%
West Creek	1,343	1,002	24	326	221	2	8	114	307	2.4%	32.5%	22.1%	0.2%	0.8%	11.4%	30.6%
Overall	8,628	8,628	137	2,207	1,296	18	49	837	4,084	1.6%	25.6%	15.0%	0.2%	0.6%	9.7%	47.3%

Source: CMCSS and RSP & Associates, LLC.

Updated: 01/05/22

- Notes:**
- 1. Student enrollment provided by CMCSS
 - 2. Areas highlighted in green have a decrease of 5% or more from the current boundaries
 - 3. Areas highlighted in orange have an increase of 5% or more from the current boundaries or are repurposed in this concept

The table update resulted in making sure both tables excluded the students that correlate in the following categories: Alternative In-District, Alt. Out-District, Alt. Unmatched, CMCSS K-12 Virtual School, Fort Campbell Middle, Out of District.

Concept 1: High School

Concept #1: Ethnicity



Updated 01/05/22

Concept 1: High School

Demographic Analysis Table			CURRENT													
School	Total Students		Asian	Black or African American	Hispanic or Latino	Native American	Pacific Islander	Multi-Racial	White	Asian	Black or African American	Hispanic or Latino	Native American	Pacific Islander	Multi-Racial	White
	Current	Concept 1														
Clarksville	1,508	1,341	35	208	179	3	4	110	969	2.32%	13.79%	11.87%	0.20%	0.27%	7.29%	64.26%
Kenwood	1,424	1,531	12	566	254	3	9	143	437	0.84%	39.75%	17.84%	0.21%	0.63%	10.04%	30.69%
Kirkwood	0	1,297														
Montgomery Central	1,074	1,076	6	123	77	5	3	53	807	0.56%	11.45%	7.17%	0.47%	0.28%	4.93%	75.14%
Northeast	1,686	1,352	21	535	285	3	21	180	641	1.25%	31.73%	16.90%	0.18%	1.25%	10.68%	38.02%
Northwest	1,366	1,366	7	373	186	6	11	132	651	0.51%	27.31%	13.62%	0.44%	0.81%	9.66%	47.66%
Rossville	1,998	1,485	67	363	265	9	5	158	1,131	3.35%	18.17%	13.26%	0.45%	0.25%	7.91%	56.61%
West Creek	1,633	1,241	34	599	332	1	18	160	489	2.08%	36.68%	20.33%	0.06%	1.10%	9.80%	29.94%
Overall	10,689	10,689	182	2,767	1,578	30	71	936	5,125	1.70%	25.89%	14.76%	0.28%	0.66%	8.76%	47.95%

Source: CMCSS and RSP & Associates, LLC.

Updated: 01/05/22

Concept 1: High School

Demographic Analysis Table			Concept 1													
School	Total Students		Asian	Black or African American	Hispanic or Latino	Native American	Pacific Islander	Multi-Racial	White	Asian	Black or African American	Hispanic or Latino	Native American	Pacific Islander	Multi-Racial	White
	Current	Concept 1														
Clarksville	1,508	1,341	30	195	158	3	5	94	856	2.2%	14.5%	11.8%	0.2%	0.4%	7.0%	63.8%
Kenwood	1,424	1,531	14	606	275	3	11	154	468	0.9%	39.6%	18.0%	0.2%	0.7%	10.1%	30.6%
Kirkwood	0	1,297	36	274	195	5	10	133	644	2.8%	21.1%	15.0%	0.4%	0.8%	10.3%	49.7%
Montgomery Central	1,074	1,076	6	124	77	5	3	53	808	0.6%	11.5%	7.2%	0.5%	0.3%	4.9%	75.1%
Northeast	1,686	1,352	19	477	230	1	14	124	487	1.4%	35.3%	17.0%	0.1%	1.0%	9.2%	36.0%
Northwest	1,366	1,366	7	373	186	6	11	132	651	0.5%	27.3%	13.6%	0.4%	0.8%	9.7%	47.7%
Rossville	1,998	1,485	42	268	191	6	3	122	853	2.8%	18.0%	12.9%	0.4%	0.2%	8.2%	57.4%
West Creek	1,633	1,241	28	450	266	1	14	124	358	2.3%	36.3%	21.4%	0.1%	1.1%	10.0%	28.8%
Overall	10,689	10,689	182	2,767	1,578	30	71	936	5,125	1.7%	25.9%	14.8%	0.3%	0.7%	8.8%	47.9%

Source: CMCSS and RSP & Associates, LLC.

Updated: 01/05/22

- Notes:
1. Student enrollment provided by CMCSS
 2. Areas highlighted in green have an decrease of 5% or more from the current boundaries
 3. Areas highlighted in orange have a increase of 5% or more from the current boundaries or are repurposed in this concept

The table update resulted in making sure both tables excluded the students that correlate in the following categories: Alternative In-District, Alt. Out-District, Alt. Unmatched, CMCSS K-12 Virtual School, Fort Campbell Middle, Out of District.

Concept #1: SES Demographic Distribution

Concept 1 - Middle School SES Demographic Distribution				
School	6th Grade	7th Grade	8th Grade	School Average
Kenwood	69%	75%	74%	73%
Kirkwood	32%	30%	35%	33%
Montgomery Central	52%	52%	53%	52%
New Providence	65%	65%	70%	67%
Northeast	54%	60%	53%	56%
Richview	39%	39%	35%	38%
Rossvie	32%	39%	41%	38%
West Creek	59%	59%	59%	59%

Source: CMCSS

Note: SES stands for Socio-Economic Status and is calculated utilizing school Free and Reduced Lunch data and the federal poverty line.

The Demographic distribution was provided by the CMCSS administration

Per Federal Guidelines, this information can not be provided in such a manner that it would indicate where the student resides

Concept 1 - High School SES Demographic Distribution					
School	9th Grade	10th Grade	11th Grade	12th Grade	School Average
Clarksville	46%	33%	36%	29%	36%
Kenwood	71%	66%	68%	68%	68%
Kirkwood	31%	33%	28%	27%	30%
Montgomery Central	53%	51%	45%	44%	48%
Northeast	57%	57%	52%	50%	54%
Northwest	63%	61%	61%	60%	61%
Rossvie	37%	34%	31%	30%	33%
West Creek	61%	58%	54%	59%	58%

Source: CMCSS

Note: SES stands for Socio-Economic Status and is calculated utilizing school Free and Reduced Lunch data and the federal poverty line.

Concept #1: SIBC

Middle School

SIBC Table	Concept 1 Reside									
	Kenwood	Kirkwood	Montgomery Central	New Providence	Northeast	Richview	Rossvie	West Creek	Total	Percent Students Impacted by Boundary Change
Current Reside										
Kenwood									0	0.0%
Montgomery Central									0	0.0%
New Providence									0	0.0%
Northeast		559							559	37.9%
Richview			1				187		188	16.6%
Rossvie		543				44			587	38.4%
West Creek	77				264				341	25.4%
Total	77	1,102	1	0	264	44	187	0	1,675	19.4%

Source: RSP & Associates 2021/22 Projection Model and CMCSS

Updated: 12/20/21

NOTES:

Current Reside is the current boundary where the student should attend (Column 1)

Concept 1 Reside is the proposed boundary where the student would attend if the Concept is approved (Columns to the right of Column 1)

SIBC is based on 6th to 8th grade students reside address in the 21/22 school year

SIBC Table	Concept 1 Reside									
	Clarksville	Kenwood	Kirkwood	Montgomery Central	Northeast	Northwest	Rossvie	West Creek	Total	Percent Students Impacted by Boundary Change
Current Reside										
Clarksville				2			201		203	13.5%
Kenwood									0	0.0%
Montgomery Central									0	0.0%
Northeast			619						619	45.3%
Northwest									0	0.0%
Rossvie	36		678						714	35.7%
West Creek		107			285				392	24.0%
Total	36	107	1,297	2	285	0	201	0	1,928	18.0%

Source: RSP & Associates 2021/22 Projection Model and CMCSS

Updated: 12/20/21

NOTES:

Current Reside is the current boundary where the student should attend (Column 1)

Concept 1 Reside is the proposed boundary where the student would attend if the Concept is approved (Columns to the right of Column 1)

SIBC is based on 9th to 12th grade students reside address in the 21/22 school year

SIBC = Student Impacted in Boundary Change

Please note: These numbers are for the projected number of students affected when the boundary change happens in 2022/2023

Middle School Calculated by analyzing the current RESIDE address of 6th and 7th grade students that will have an attendance area change in the following year

High School Calculated by analyzing the current RESIDE address of 9th, 10th, and 11th grade students that will have an attendance area changed in the following year

Calculates by the student address (Reside) and how that address may change attendance area with proposed concept.

Part

Discussion and Activities

Next Steps

Board of Education

Initial – January 4, 2022

Final – February 8, 2022

Public Input/Discussion

Informal – January 17, 2022

Informal – January 18, 2022

Formal – February 1, 2022

Committee

Meeting #3 – January 25, 2022



Notes

This image shows a single sheet of white paper with horizontal ruling lines. The lines are evenly spaced and run across the width of the page. There are no margins, text, or other markings on the paper.